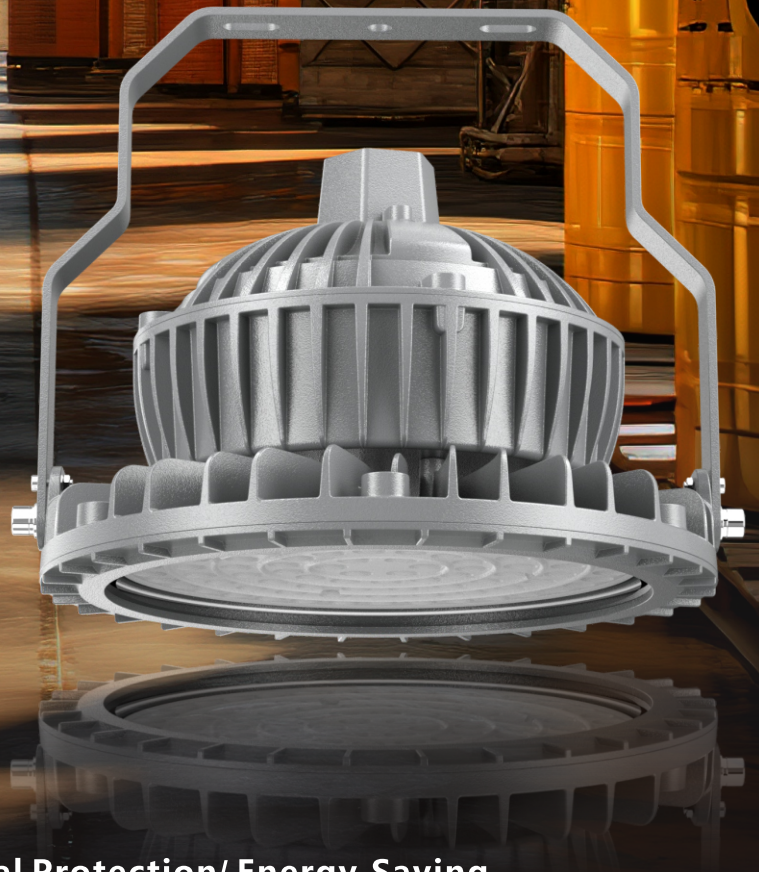




FEICHI 菲驰照明

EXPLOSION-PROOF LED HIGH BAY LIGHT

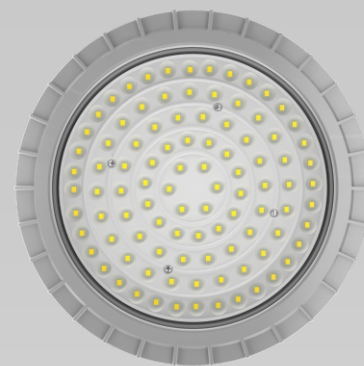
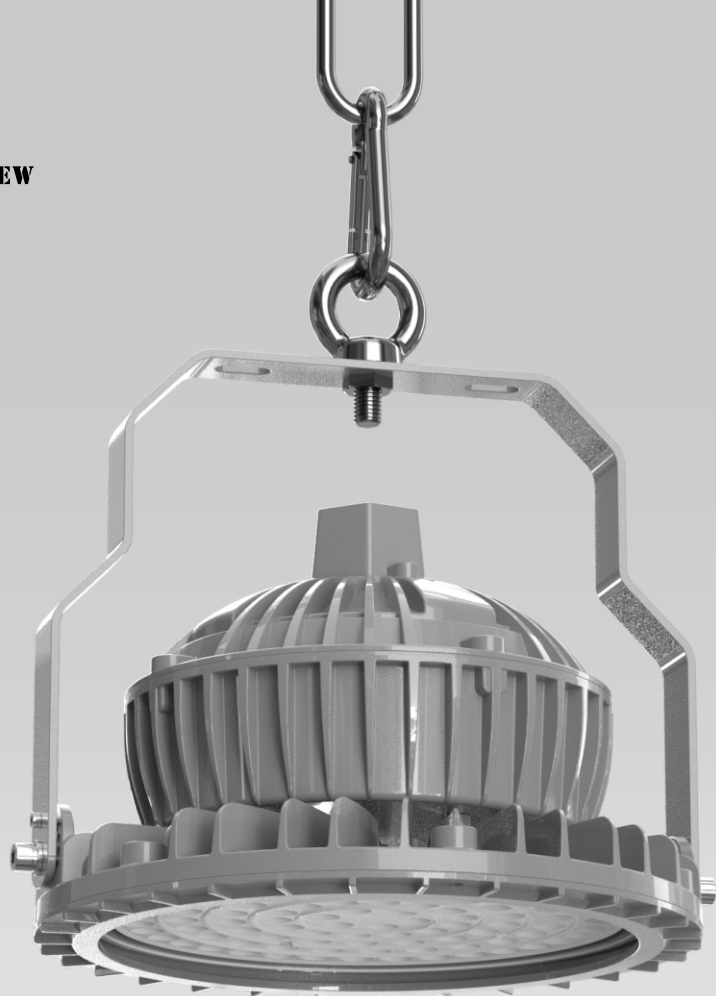
50-70W/100-150W/200-250W/300W



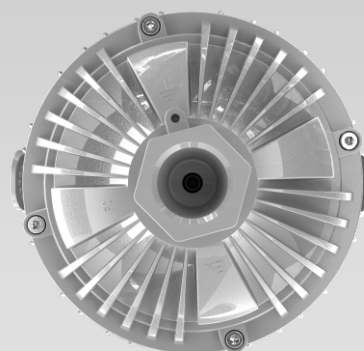
Safety/ Environmental Protection/ Energy-Saving

SHENZHEN FEICHI LIGHTING CO., LTD.

OVERVIEW



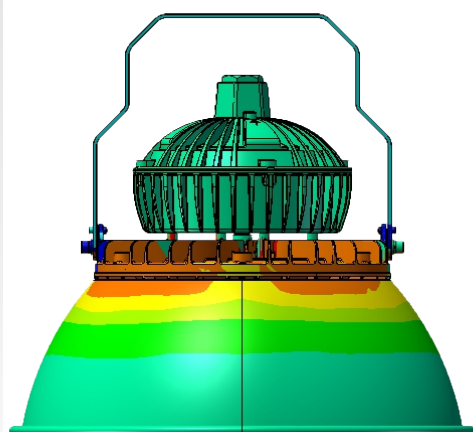
Bottom



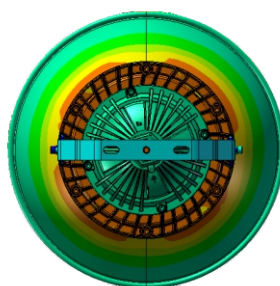
Top

THERMAL MANAGEMENT

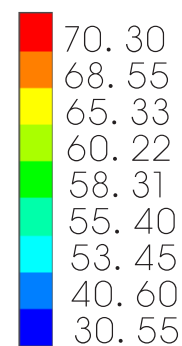
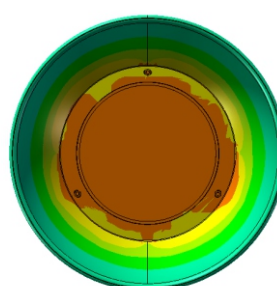
Structure is optimized by advanced FEA technology. Achieving longer lifespan at best cost-efficiency.



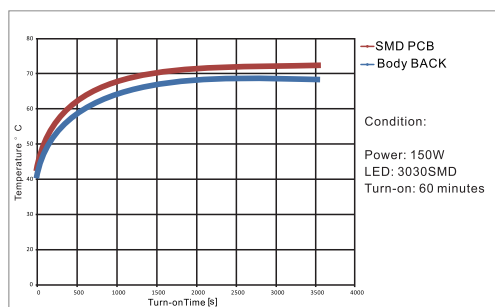
Thermal Conductivity



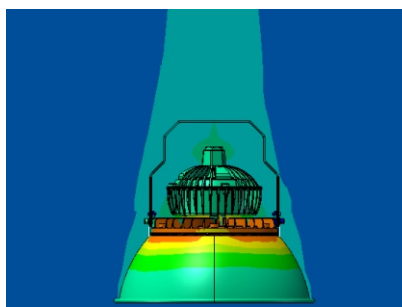
Thermal Conductivity



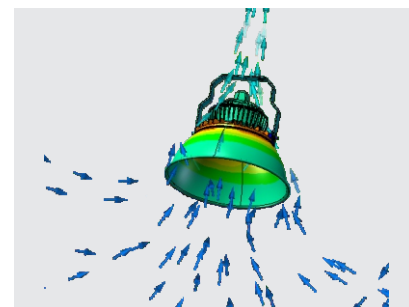
Unit: °C



Temperature Rise Curve



Thermal Air Flow

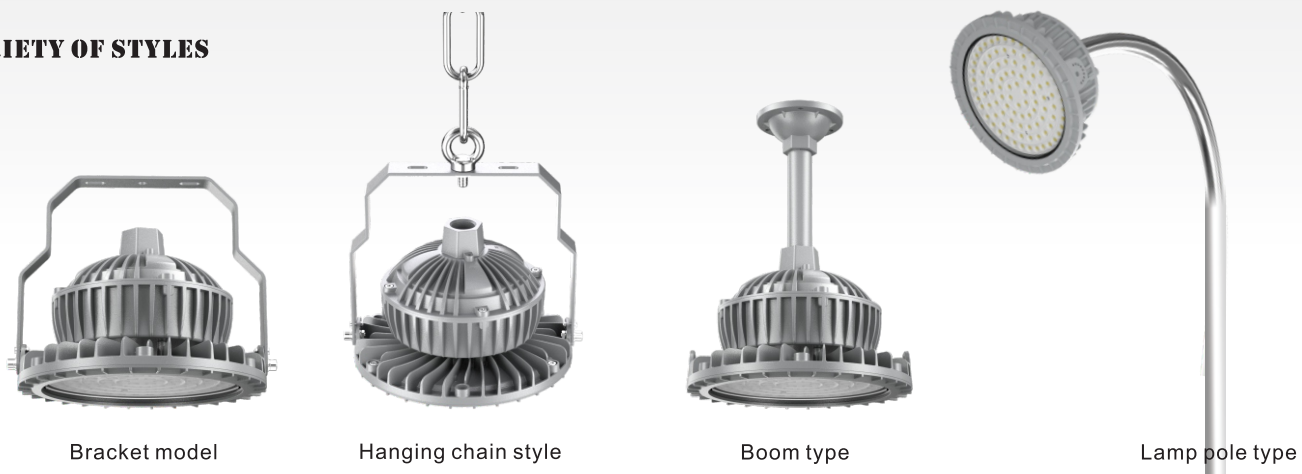


Thermal Air Convection

EXPLODED



A VARIETY OF STYLES

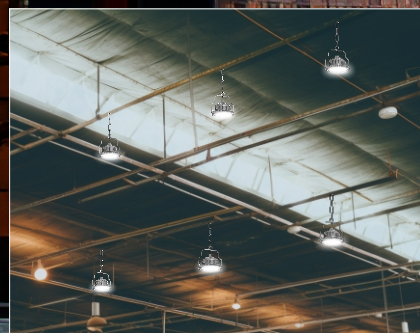


SCENCE LMAGE

It is suitable for hazardous chemical projects such as gas stations, petroleum smelting, coal mines, and ships.



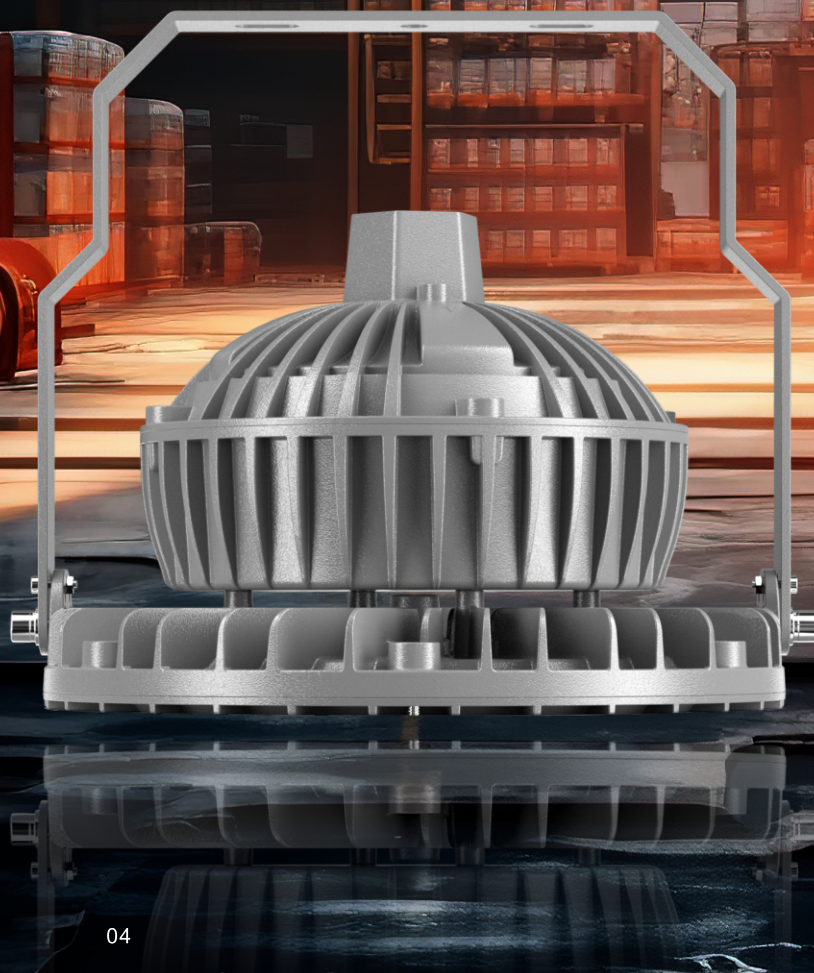
smelter



coal mine



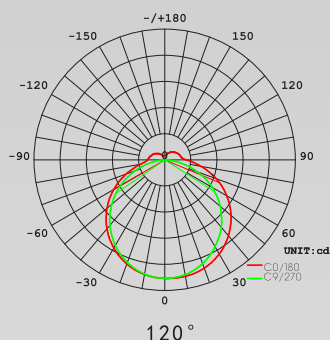
oil plant



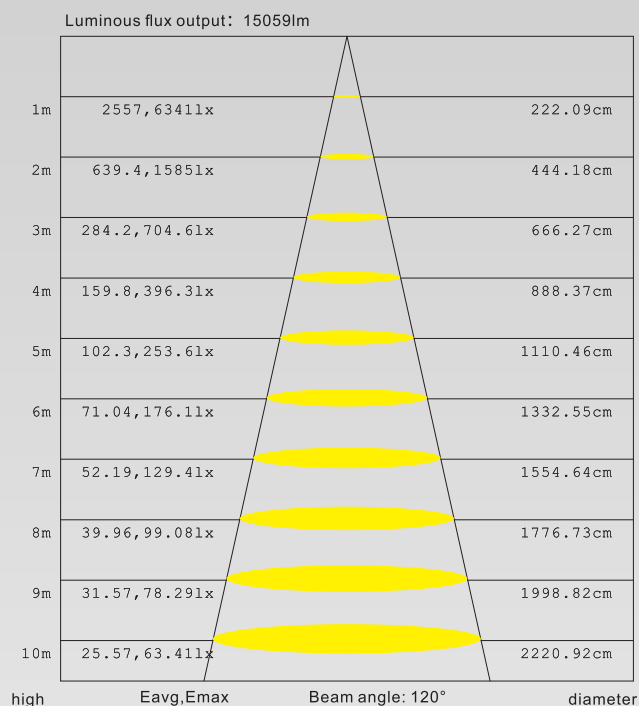
OPTICS

Tech. Support: Tell us the room length, width, height and the usage. We have an engineer team to respond the DIALUX simulations for lights quantity calculation and effects.

.ies files are available upon request.



100W average illumination diagram



Note: The curve is the illumination area of the lamp at different projection distances and the average illumination in the area.

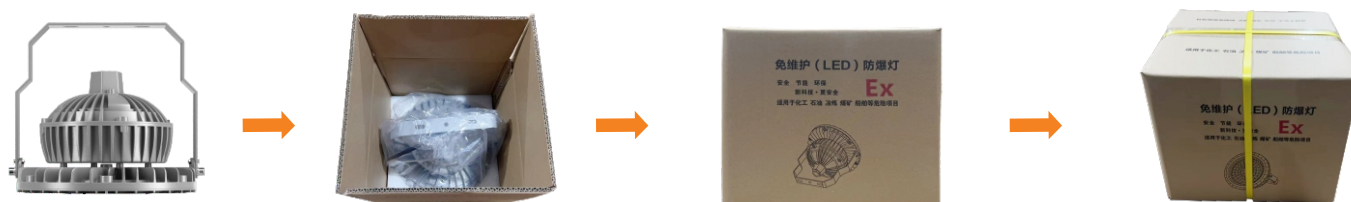
PRODUCT SPECIFICATIONS

Model	Power	Product size (including lampshade)	Product size (without lampshade)	Light Source	Waterproof Level
FCZM-FBDYX50	50W	φ 362x367mm	φ 230x206mm	Lumileds3030/2835	IP66
FCZM-FBDYX70	70W	φ 362x367mm	φ 230x206mm	Lumileds3030/2835	IP66
FCZM-FBDYX100	100W	φ 423x363mm	φ 270x221mm	Lumileds3030/2835	IP66
FCZM-FBDYX150	150W	φ 423x363mm	φ 270x221mm	Lumileds3030/2835	IP66
FCZM-FBDYX200	200W	φ 510x408mm	φ 330x235mm	Lumileds3030/2835	IP66
FCZM-FBDYX250	250W	φ 510x408mm	φ 330x235mm	Lumileds3030/2835	IP66
FCZM-FBDYX300	300W	φ 555x434mm	φ 360x245mm	Lumileds3030/2835	IP66

Remarks: Philips power supply/Taiwan MEAN WELL/Moso power supply/ Sosen power supply/ (optional)

Accessories: bracket type/suspended chain type/boom type/light pole type

PACKAGING

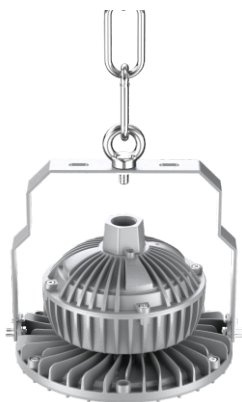


PRODUCT INSTALLATION

Product installation

For places with explosion-proof requirements, the terminals should be properly installed by using explosion-proof junction boxes. The installation must be completed by a professional electrician and must be reliably grounded.

1



Hanging chain style



The installation is complete

2



Boom type



The installation is complete

3



Lamp pole type

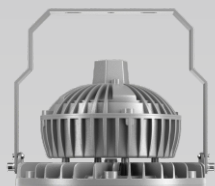


The installation is complete

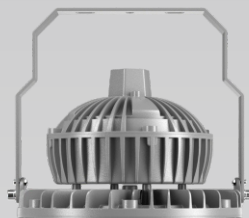
DIAGRAMS

(unit:mm)

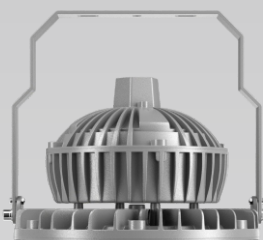
WITHOUT LAMPSHADE:



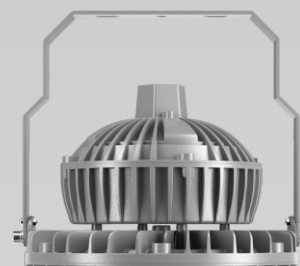
50-70W



100-150W



200-250W



300W

LAMPSHADE STYLE:



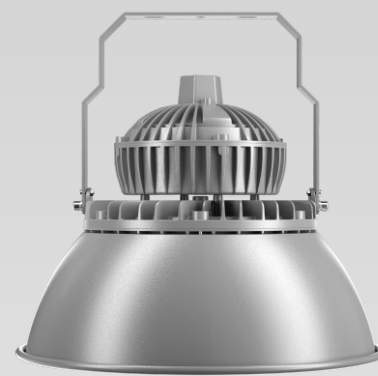
50-70W



100-150W



200-250W

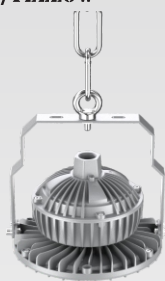


300W

AVAILABLE STYLES: GRAY/YELLOW



With lampshade bracket



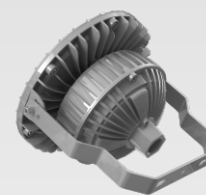
Hanging chain style



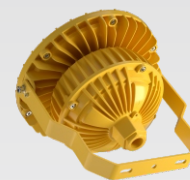
Boom type



Lamp pole type

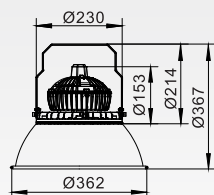


Bracket model (grey)

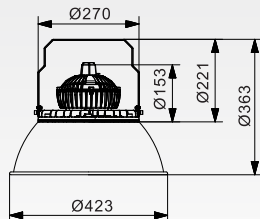


Bracket model (yellow)

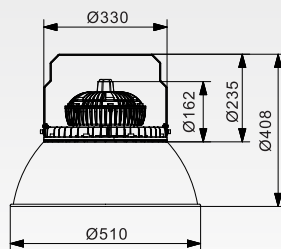
LAMPSHADE STYLE:



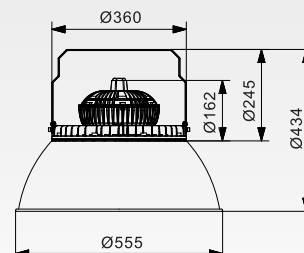
50-70W



100-150W



200-250W



300W

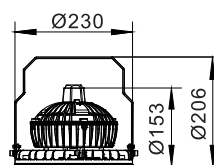


Bottom

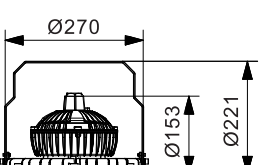


top surface

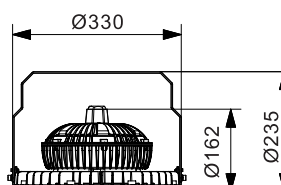
WITHOUT LAMPSHADE:



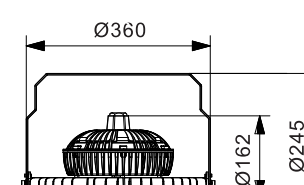
50-70W



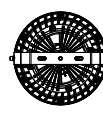
100-150W



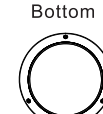
200-250W



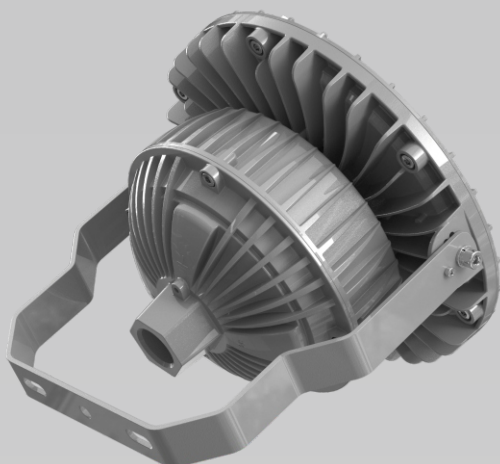
300W



Bottom



Top



FEATURES:

1. Input Voltage 100-277V/50HZ.
2. Waterproof grade IP66.
3. Suitable for 3030/2835 lamp beads.
4. Suitable for hazardous chemical projects such as gas stations, petroleum smelting, coal mines, and ships.
5. With lampshade/without lampshade, gray/yellow and other styles.
6. Multiple installation methods: bracket type /suspended chain type/boom type/light pole type, There are four installation methods.
7. Complete certifications.



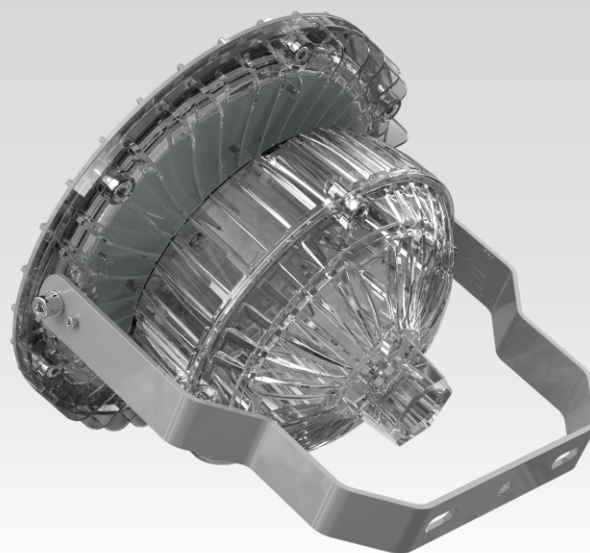
CAUTIONS:

《Design Patent Certificate》 《Inspection Report》 《Explosion-proof Certificate》

1. Installation must be done by professional electricians.
2. Do NOT dismantle the product. It may be dangerous.
3. Do NOT stare at the light with naked eyes. It is harmful to eyes.
4. For outdoor lighting, waterproof measurements must be done to the cable terminals.

WARRANTY:

1. All LED lights are warranted by the manufacturer to be free of defects in material and workmanship for 3 years **(or 5 years with different costs)**.
2. Warranty becomes void if the products is modified, improperly installed or used, damaged by accident or neglect, or if any parts are improperly installed or replaced by the user,
3. During the period of warranty time, if some products of us fails during normal circumstances and applications or have any defects above defined, we shall at our own choice replace or repair the defective products at no charge. And the liability claims would NOT exceed the value of the product itself.



SHENZHEN FEICHI LIGHTING CO., LTD.

Telephone: 13528411508/13392903966(Mr. Chen)

18022050733 (Miss Zhang) 13680225080 (Miss Lin)

Email: 4989298@qq.com/734271756@qq.com

Website: WWW.feichiex.com

Factory address: 5th Floor, No. 4, Hengkang Street, Guzhen Town, Zhongshan City, Guangdong Province

Marketing Center Address: Room 312, Building 2, No. 111, Lianbu Road, Helian Community, Longhua Street, Longhua District, Shenzhen City