



FEICHI
菲驰照明

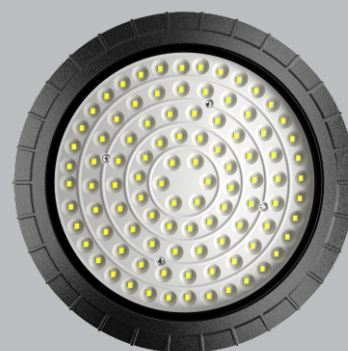


50W/70W/100W/150W/200W/250/300W

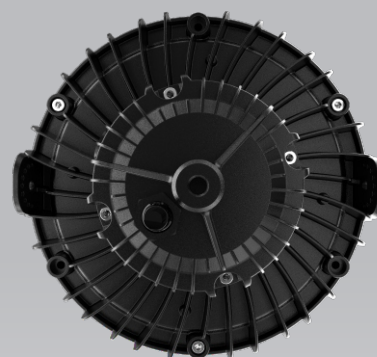
LED
HIGH BAY LIGHT

SHENZHEN FEICHI LIGHTING CO., LTD.

OVERVIEW



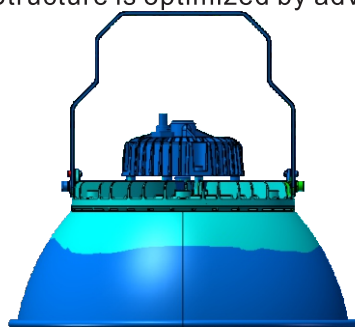
Bottom



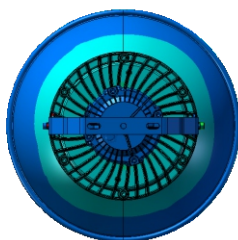
Top

THERMAL MANAGEMENT

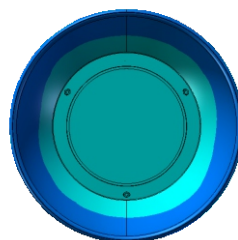
Structure is optimized by advanced FEA technology. Achieving longer lifespan at best cost-efficiency.



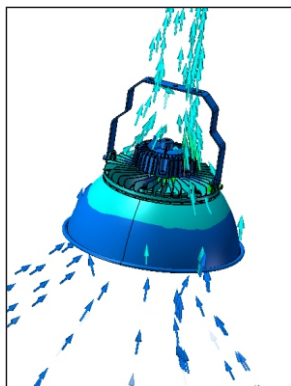
Thermal Conductivity



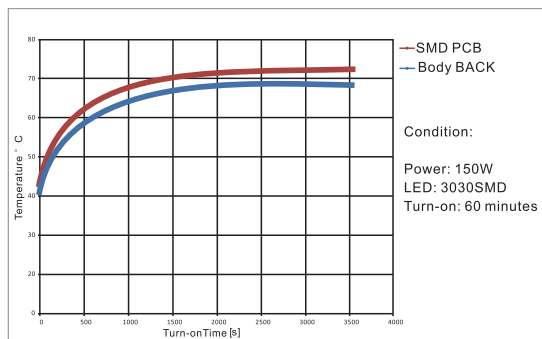
Thermal Conductivity



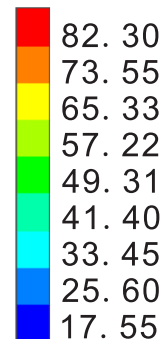
Thermal Air Flow



Thermal Air Convection



Temperature Rise Curve

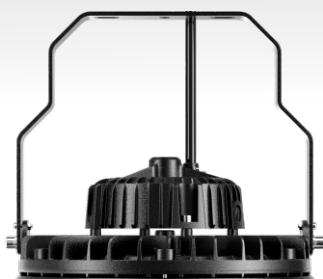


Unit: °C

EXPLODED



OPTIONS



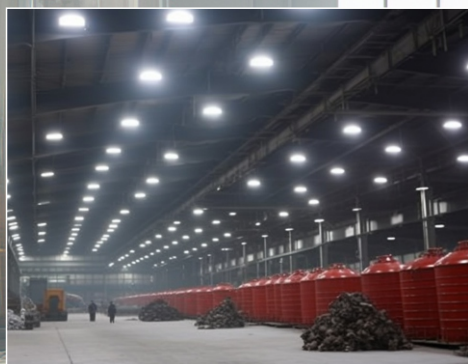
Without Lampshade



With Lampshade

APPLICATIONS

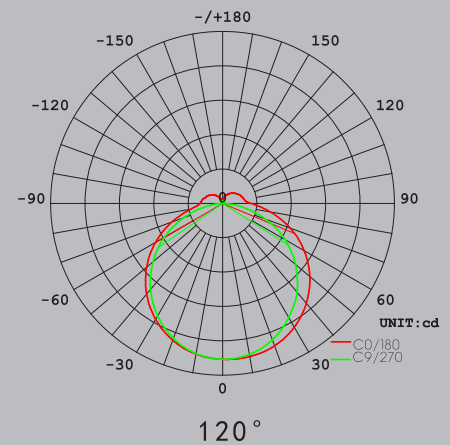
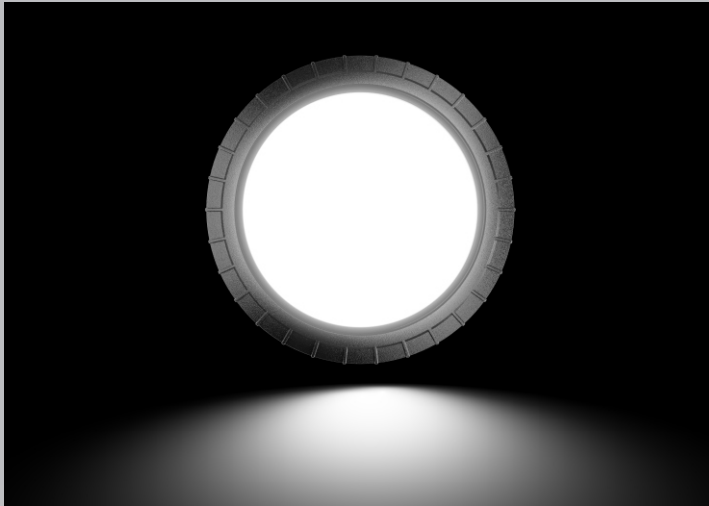
It is suitable for hazardous chemical projects such as gas stations, petroleum smelting, coal mines, and ships.



OPTICS

Tech. Support: Tell us the room length, width, height and the usage. We have an engineer team to respond the DIALUX simulations for lights quantity calculation and effects.

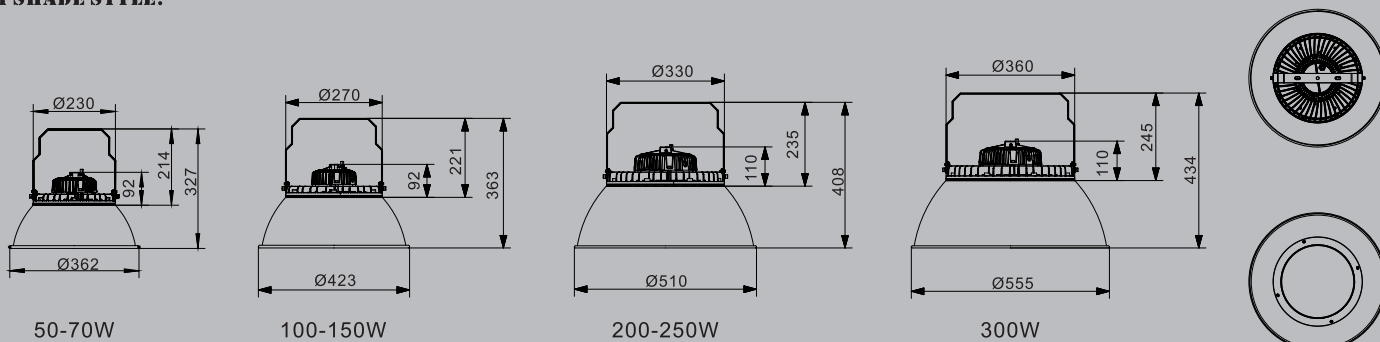
.ies files are available upon request.



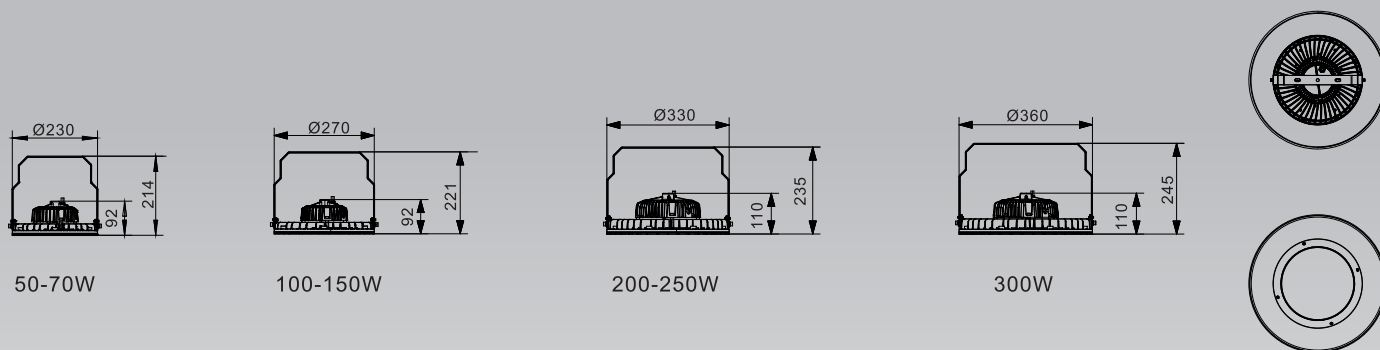
DIAGRAMS

(unit:mm)

LAMPSHADE STYLE:



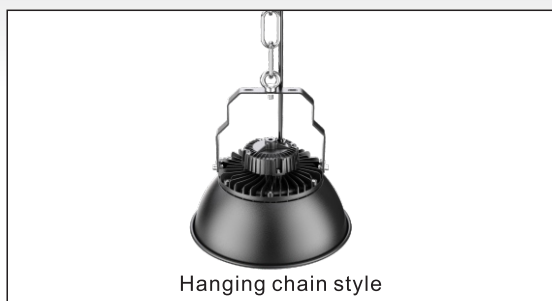
WITHOUT LAMPSHADE:



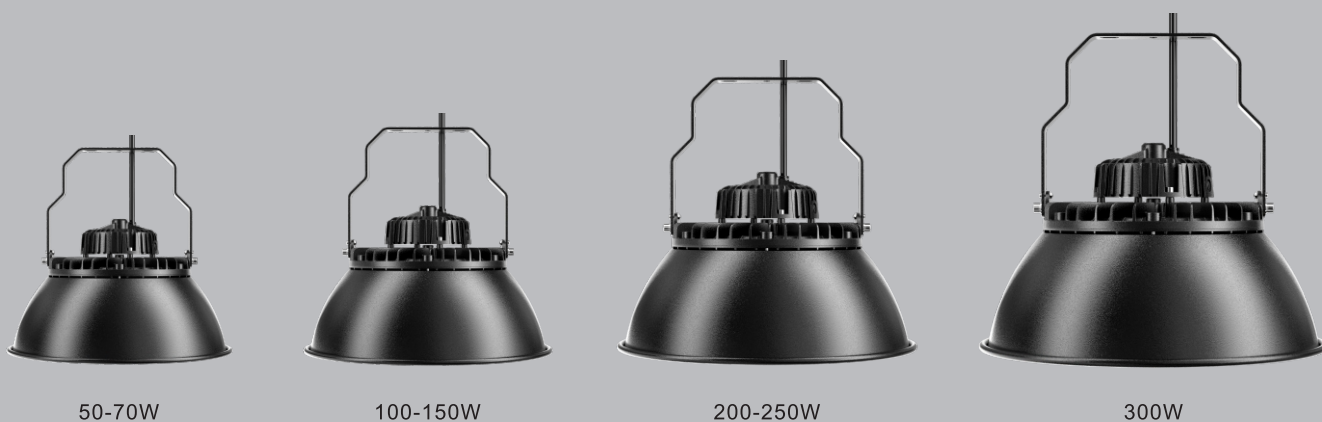
PRODUCT INSTALLATIONS

Multiple Installation Methods

For places with explosion-proof requirements, the terminals should be properly installed by using explosion-proof junction boxes. The installation must be completed by a professional electrician and must be reliably grounded.



MAIN PARAMETERS



With lampshade

Without lampshade

PRODUCT SPECIFICATIONS

Model	Power	Size(with lampshade)	Size(without lampshade)	Light Sources	IP Grade
FCZM-FBDYX50	50W	φ 362x367mm	φ 230x206mm	Lumileds3030/2835	IP66
FCZM-FBDYX70	70W	φ 362x367mm	φ 230x206mm	Lumileds3030/2835	IP66
FCZM-FBDYX100	100W	φ 423x363mm	φ 270x221mm	Lumileds3030/2835	IP66
FCZM-FBDYX150	150W	φ 423x363mm	φ 270x221mm	Lumileds3030/2835	IP66
FCZM-FBDYX200	200W	φ 510x408mm	φ 330x235mm	Lumileds3030/2835	IP66
FCZM-FBDYX250	250W	φ 510x408mm	φ 330x235mm	Lumileds3030/2835	IP66
FCZM-FBDYX300	300W	φ 555x434mm	φ 360x245mm	Lumileds3030/2835	IP66

Note: Philips driver, Taiwan meanwell, MOSO driver, Sosen driver optional Accessories: Bracket, Chain

PACKAGING





FEATURES:

1. Input voltage 100-277V/50HZ.
2. Efficacy 130lm/W.
3. Color temperature 3200K-6500K.
4. Suitable for chemical work plant, logistics warehouses, and similar locations.
5. Anti-corrosion level WF1-WF2.
6. Optional accessories lampshade and bracket.
7. Multiple installation methods: Bracket installation, Chain-suspended installations.

CAUTIONS:

1. Installation must be done by professional electricians.
2. Do NOT dismantle the product. It may be dangerous.
3. Do NOT stare at the light with naked eyes. It is harmful to eyes.
4. For outdoor lighting, waterproof measurements must be done to the cable terminals.



WARRANTY:

1. All LED lights are warranted by the manufacturer to be free of defects in material and workmanship for 3 years (or 5 years with different costs).
2. Warranty becomes void if the products is modified, improperly installed or used, damaged by accident or neglect, or if any parts are improperly installed or replaced by the user,
3. During the period of warranty time, if some products of us fails during normal circumstances and applications or have any defects above defined, we shall at our own choice replace or repair the defective products at no charge. And the liability claims would NOT exceed the value of the product itself.

SHENZHEN FEICHI LIGHTING CO., LTD.

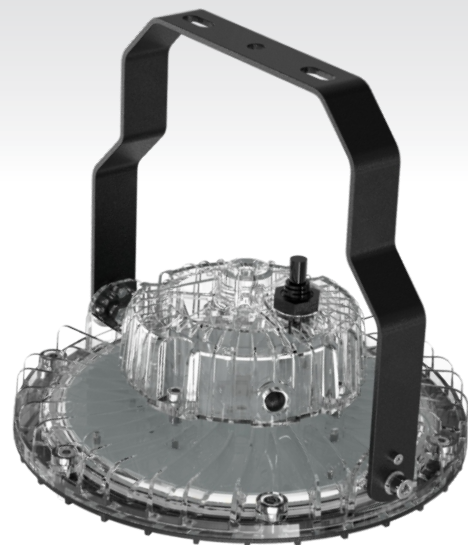
Telephone: 13528411508/13392903966(Mr. Chen)
18022050733 (Miss Zhang) 13680225080 (Miss Lin)

Email: 4989298@qq.com/734271756@qq.com

Website: WWW.feichiex.com

Factory address: 5th Floor, No. 4, Hengkang Street, Guzhen Town, Zhongshan City, Guangdong Province

Marketing Center Address: Room 312, Building 2, No. 111, Lianbu Road, Helian Community, Longhua Street, Longhua District, Shenzhen City



Clear View