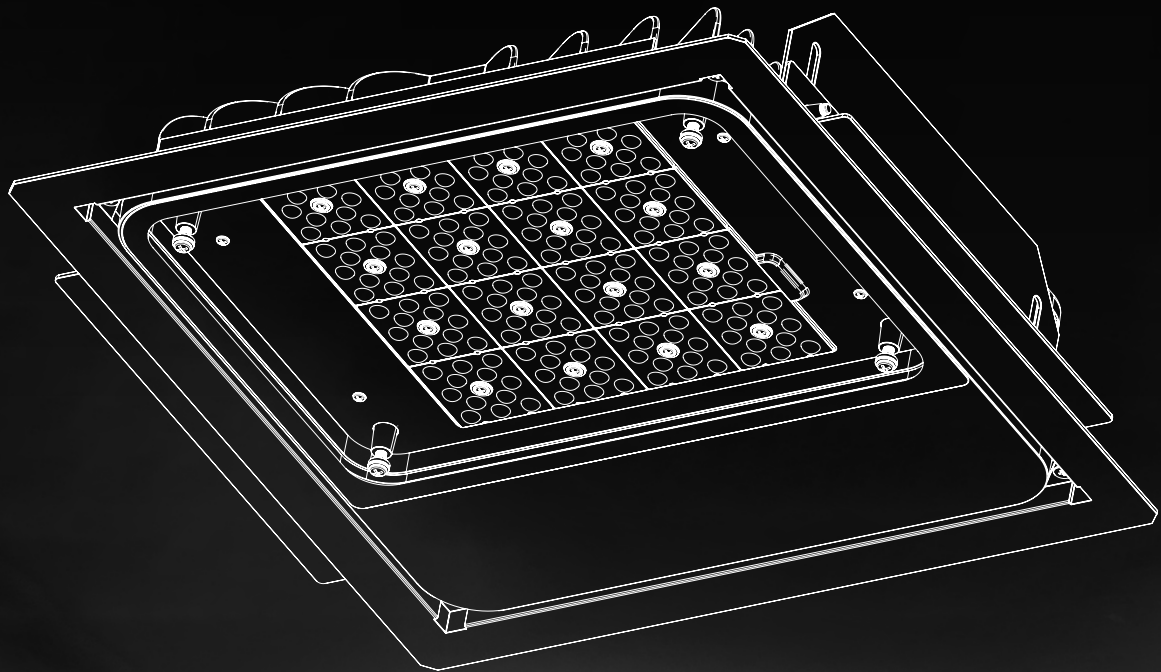


FEICHI
菲驰照明

Explosion-proof
LED Gas Station Light
With Certificates



Safety/ Environmental Protection/ Energy-Saving

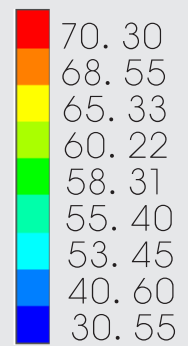
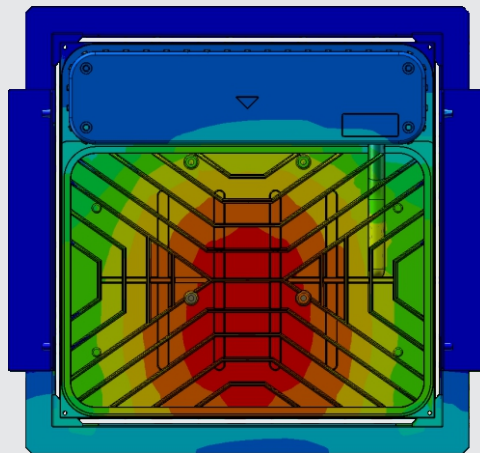
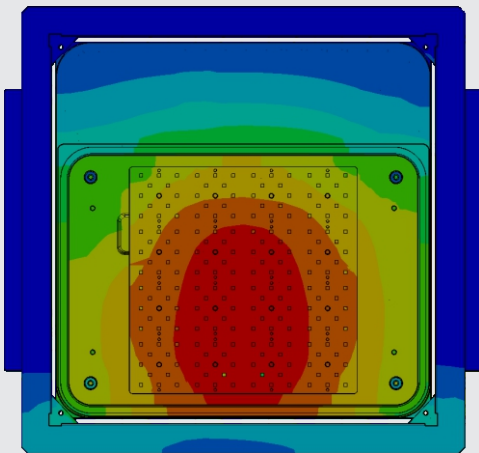
SHENZHEN FEICHI LIGHTING CO., LTD.

OVERVIEW



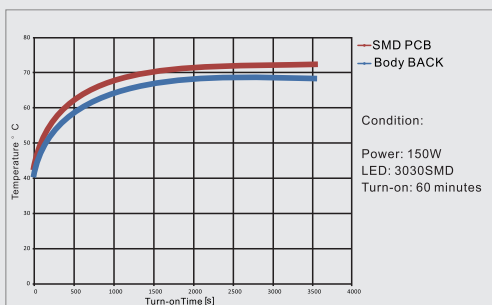
Thermal Management

Structure is optimized by advanced FEA technology. Cold-Hot Zones are divided to achieve longer lifespan for the LED driver..

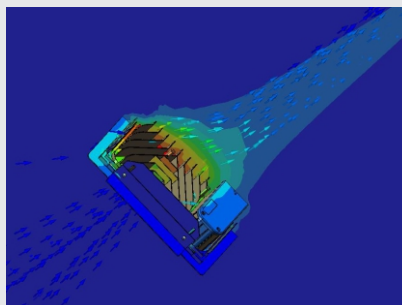


Unit: °C

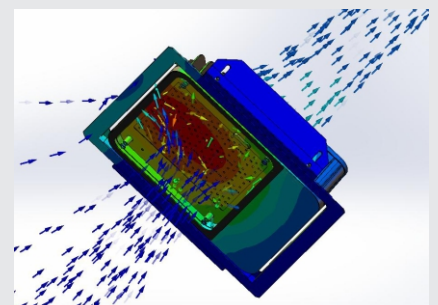
Thermal Conductivity



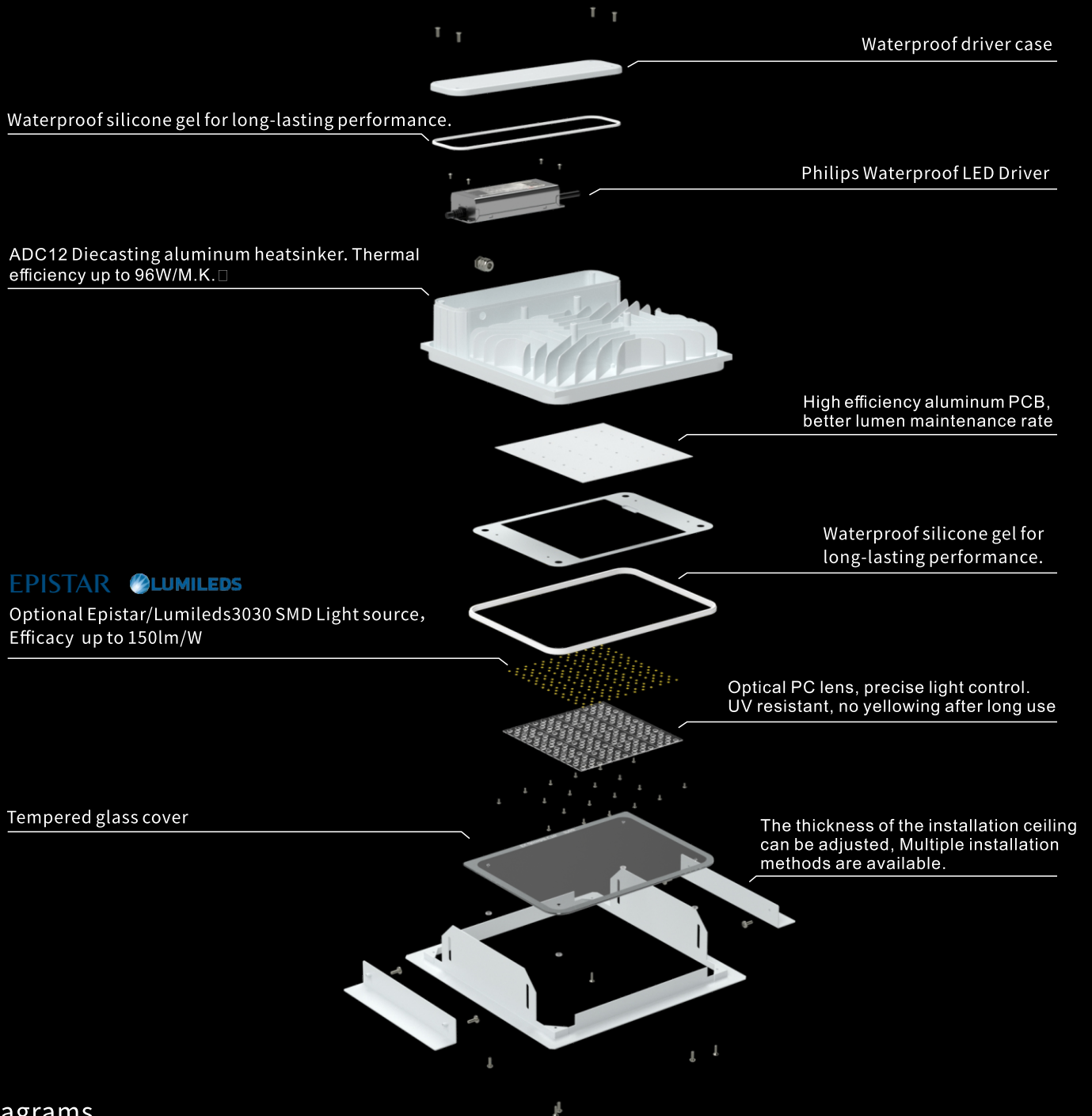
Temperature rise curve



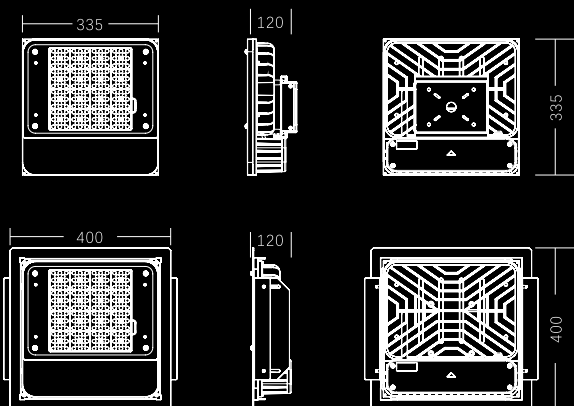
Thermal Air Flow



Thermal Air Convection



Diagrams



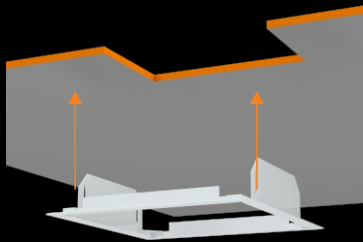
Optional with Emergency Function
Radar Sensor Function

INSTALLATION INSTRUCTIONS

A variety of installation methods can be selected to meet the needs of different lighting places.

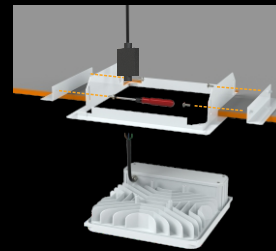
For places with explosion-proof requirements, wiring should be properly installed using an explosion-proof junction box. The installation must be completed by a professional electrician and grounded reliably.

Embedded Installation



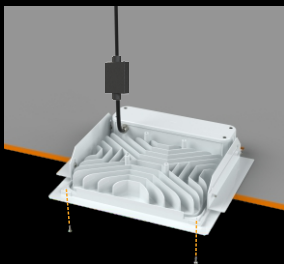
Embedded installation-Figure 1

Complete the opening on the ceiling according to the opening size of the lamp.
Put the fixture bracket into the hole.



Embedded installation-Figure 2

Fix the lamp bracket to the ceiling with a screwdriver.
The installation ceiling thickness can be adjusted.



Embedded installation-Figure 3

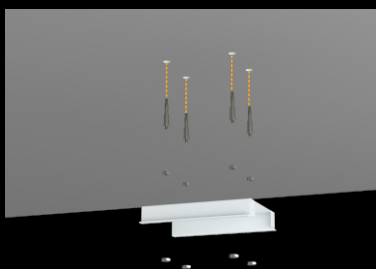
Connect the wires, use screws to fix the lamp on the bracket to complete the installation.



Embedded installation-Figure 4

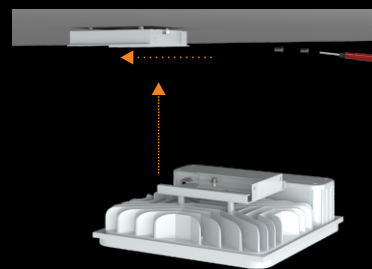
Installation finished.

Surface Mounted Installation



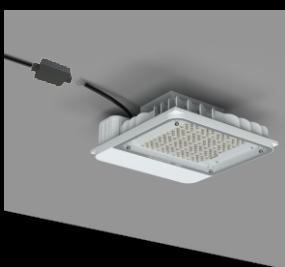
Surface Mounted Installation-Figure 1

Use expansion screws on the ceiling according to the size,
Fasten the fixture bracket with screws



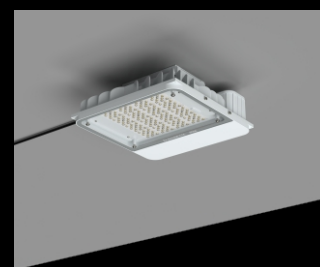
Surface Mounted Installation-Figure 2

Use screws to fix the lamp on the bracket



Surface Mounted Installation-Figure 3

Connect the wires



Surface Mounted Installation-Figure 4

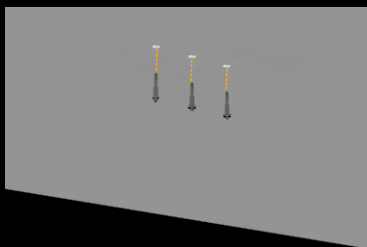
Installation Finisehd.

INSTALLATION INSTRUCTIONS

A variety of installation methods can be selected to meet the needs of different lighting places.

For places with explosion-proof requirements, wiring should be properly installed using an explosion-proof junction box. The installation must be completed by a professional electrician and grounded reliably.

U Type Bracket Installation



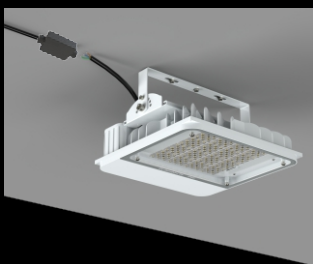
U Type Bracket Installation- Figure 1

Use expansion screws on the ceiling according to the size



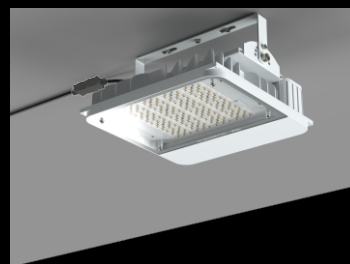
U Type Bracket Installation- Figure2

Use expansion screws to fix the lamp on the ceiling



U Type Bracket Installation- Figure3

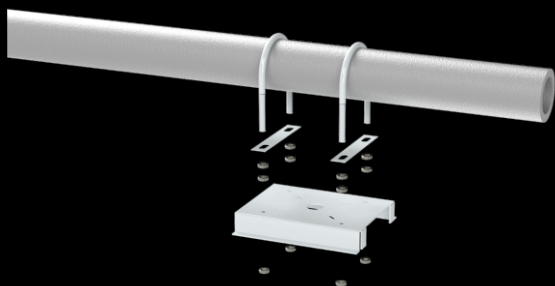
Connect the wires



U Type Bracket Installation- Figure4

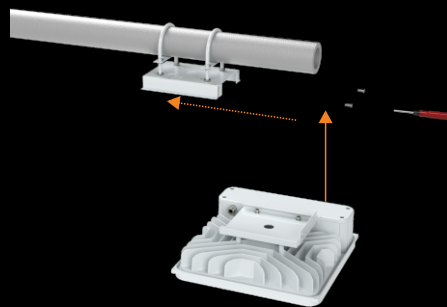
Installation Finished

Pipe-mouted Installation



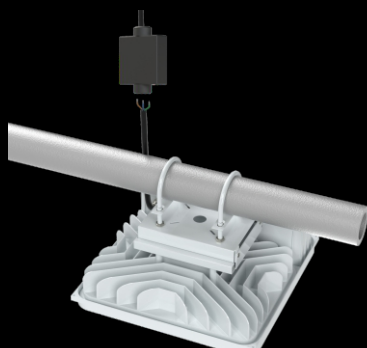
Pipe-mouted Installation Figure1

Fix the fixture bracket on the steel pipe with screws



Pipe-mouted Installation Figure2

Use screws to fix the lamp on the bracket



Pipe-mouted Installation Figure3

Connect the wires

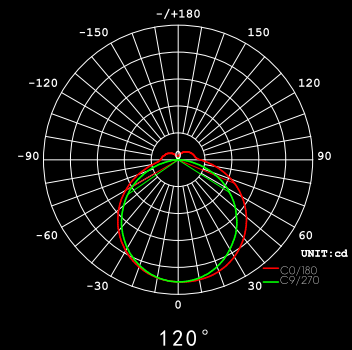
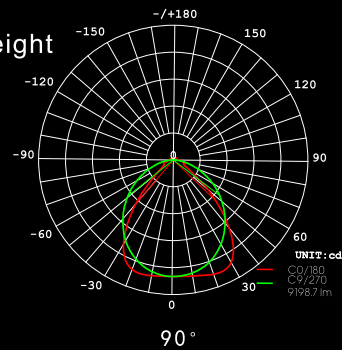


Pipe-mouted Installation Figure4

Installation Finisehd.

Tech. Support: Tell us the room length, width, height and the usage. We have an engineer team to respond the DIALUX simulations for lights quantity calculation and effects.

.ies files are available upon request.



200W Average LUX-DISTANCE

Luminous Flux: 26078 lm

Height	Eavg	Emax	Beam Angle: 94.61 deg	Spot Dia.
1m	4436,11178lx	216.78cm		
2m	1109,27951x	433.57cm		
3m	492.9,12421x	650.35cm		
4m	277.3,698.61x	867.14cm		
5m	177.5,447.11x	1083.92cm		
6m	123.2,310.51x	1300.71cm		
7m	90.54,228.11x	1517.49cm		
8m	69.32,174.71x	1734.28cm		
9m	54.77,138.01x	1951.06cm		
10m	44.36,111.81x	2167.85cm		

150W Average LUX-DISTANCE

Luminous Flux: 20808 lm

Height	Eavg	Emax	Beam Angle: 95.75 deg	Spot Dia.
1m	3539,88221x	221.16cm		
2m	884.9,22061x	442.32cm		
3m	393.3,980.21x	663.48cm		
4m	221.2,551.41x	884.63cm		
5m	141.6,352.91x	1105.79cm		
6m	98.32,245.11x	1326.95cm		
7m	72.23,180.01x	1548.11cm		
8m	55.30,137.81x	1769.27cm		
9m	43.70,108.91x	1990.43cm		
10m	35.39,88.221x	2211.59cm		

100W Average LUX-DISTANCE

Luminous Flux: 15059 lm

Height	Eavg	Emax	Beam Angle: 95.99 deg	Spot Dia.
1m	2557,63411x	222.09cm		
2m	639.4,15851x	444.18cm		
3m	284.2,704.61x	666.27cm		
4m	159.8,396.31x	888.37cm		
5m	102.3,253.61x	1110.46cm		
6m	71.04,176.11x	1332.55cm		
7m	52.19,129.41x	1554.64cm		
8m	39.96,99.081x	1776.73cm		
9m	31.57,78.291x	1998.82cm		
10m	25.57,63.411x	2220.92cm		

Suitable for gas stations, petroleum smelting, coal mines, ships and other hazardous chemical projects



MAIN PARAMETERS

--Surface Mounted

Model	FCZM-FBD-MZ01	FCZM-FBD-MZ02	FCZM-FBD-MZ03	FCZM-FBD-MZ04	FCZM-FBD-MZ05	FCZM-FBD-MZ06
Power	100W	150W	200W	100W	150W	200W
Size	335*335*120mm	335*335*120mm	335*335*120mm	335*335*120mm	335*335*120mm	335*335*120mm
LED Driver	Universal Voltage EX-proof Constant Current Driver			PHILIPS	PHILIPS	PHILIPS
LED Chips	Taiwan Epistar 3030 SMD			Lumileds3030	Lumileds3030	Lumileds3030
Qty. LEDs	8C24B 12*16	8C24B 12*16	8C24B 12*16	8C24B 12*16	8C24B 12*16	8C24B 12*16
Warranty	3 years	3 years	3 years	7 years	7 years	7 years

--Embedded

Model	FCZM-FBD-AZ01	FCZM-FBD-AZ02	FCZM-FBD-AZ03	FCZM-FBD-AZ04	FCZM-FBD-AZ05	FCZM-FBD-AZ06
Power	100W	150W	200W	100W	150W	200W
Size	400*400*120mm	400*400*120mm	400*400*120mm	400*400*120mm	400*400*120mm	400*400*120mm
Cutout Size	360*360mm	360*360mm	360*360mm	360*360mm	360*360mm	360*360mm
LED Driver	Universal Voltage EX-proof Constant Current Driver			PHILIPS	PHILIPS	PHILIPS
LED Chips	Taiwan Epistar 3030 SMD			Lumileds3030	Lumileds3030	Lumileds3030
Qty. LEDs	8C24B 12*16	8C24B 12*16	8C24B 12*16	8C24B 12*16	8C24B 12*16	8C24B 12*16
Warranty	3 years	3 years	3 years	7 years	7 years	7 years

Packing & Packaging



Packing Data

--Surface Mounted

Model	FCZM-FBD-MZ01	FCZM-FBD-MZ02	FCZM-FBD-MZ03	FCZM-FBD-MZ04	FCZM-FBD-MZ05	FCZM-FBD-MZ06
CTN Size	390*390*180mm	390*390*180mm	390*390*180mm	390*390*180mm	390*390*180mm	390*390*180mm
N.W.	5.2KGS	5.6KGS	6KGS	5.8KGS	6KGS	6.2KGS
G.W.	6.3KGS	6.6KGS	7KGS	6.5KGS	6.7KGS	6.9KGS
Qty.	1PC	1PC	1PC	1PC	1PC	1PC

--Embedded

Model	FCZM-FBD-MZ01	FCZM-FBD-MZ02	FCZM-FBD-MZ03	FCZM-FBD-MZ04	FCZM-FBD-MZ05	FCZM-FBD-MZ06
CTN Size	475*445*145mm	475*445*145mm	475*445*145mm	475*445*145mm	475*445*145mm	475*445*145mm
N.W.	6.4KGS	6.8KGS	7KGS	6.6KGS	6.8KGS	7KGS
G.W.	7.4KGS	7.8KGS	8KGS	7.6KGS	7.8KGS	8KGS
Qty.	1PC	1PC	1PC	1PC	1PC	1PC

CERTIFICATES & APPROVALS



"China Energy Conservation and Environmental Protection Product Certificate"



"Government Procurement Excellent Supplier Certificate"



"Certificate of National Consumers' Reliable Satisfaction Product"



"China Product Quality Assurance Brand Certificate"



"National 3.15 Integrity Enterprise Certificate"



"Explosion-proof electrical inspection report"



"Appearance Design Patent Certificate"



"AAA Credit Rating Certificate"



"Explosion-proof Certificate"

WARRANTY:

1. All LED gas station lights are warranted by the manufacturer to be free of defects in material and workmanship for 3 years (or 7 years with different costs).
2. Warranty becomes void if the products is modified, improperly installed or used, damaged by accident or neglect, or if any parts are improperly installed or replaced by the user,
3. During the period of warranty time, if some products of us fails during normal circumstances and applications or have any defects above defined, we shall at our own choice replace or repair the defective products at no charge. And the liability claims would NOT exceed the value of the product itself.

CAUTIONS:

1. Installation must be done by professional electricians.
2. Do NOT take apart the product. It may be dangerous.
3. Do NOT stare at the light with naked eyes. It is harmful to eyes.
4. For outdoor lighting, waterproof measurements must be done to the cable terminals.

SHENZHEN FEICHI LIGHTING CO., LTD.

Tel.: 13528411508 13392903966 E-mail: 4989298@qq.com

Address: Room 312, Building 2, No. 111, Lianbu Road, Helian Community, Longhua Street, Longhua District, Shenzhen, P.R. China