



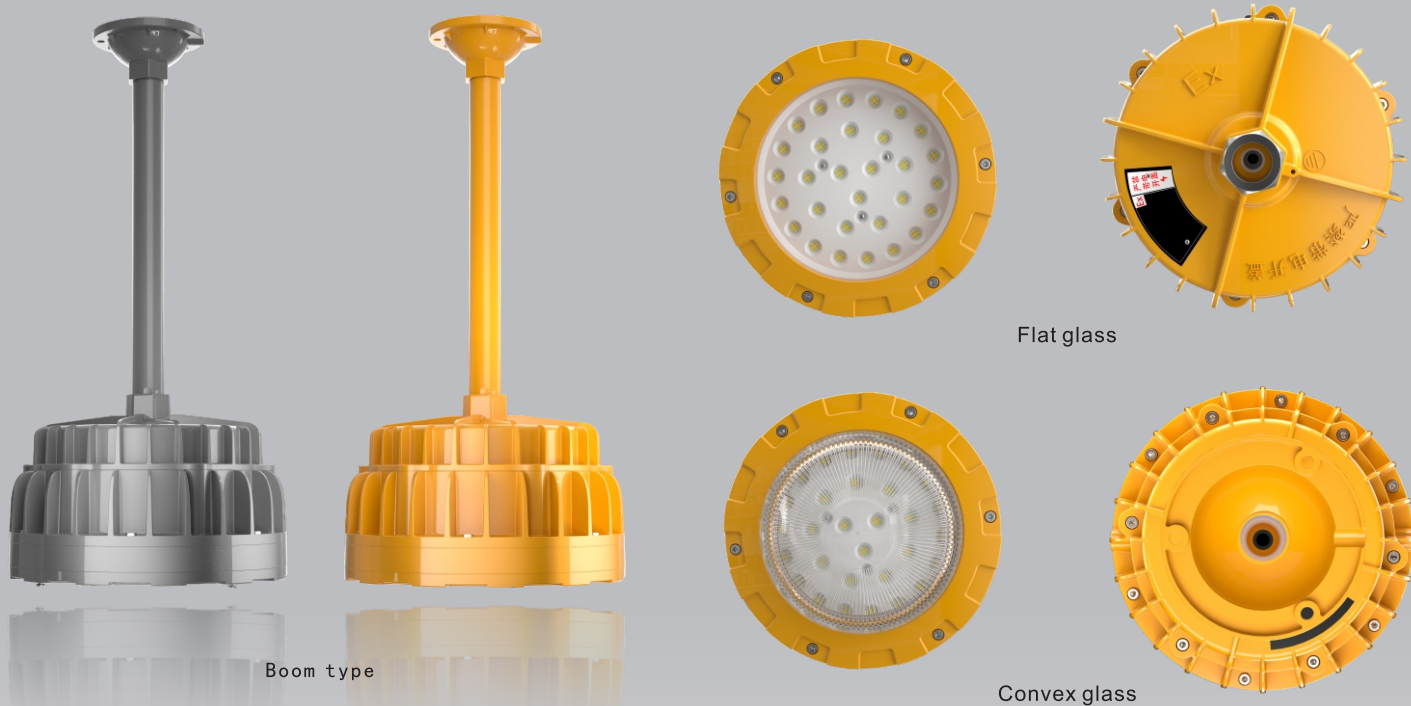
FEICHI
菲驰照明

Ex LED
Platform Light

Safe & Energy-saving

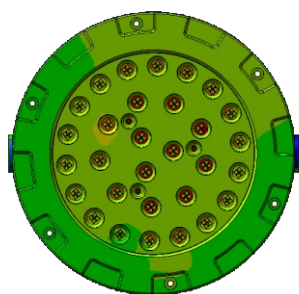
SHENZHEN FEICHI LIGHTING CO., LTD.

OVERVIEW

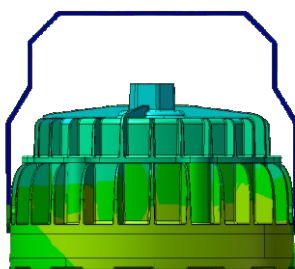


THERMAL MANGEMENT

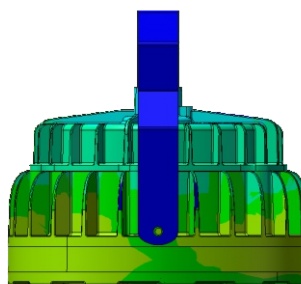
Suructure is optimized by advanced FEA technology.Achieving longer lifespan at best cost-efficiency.



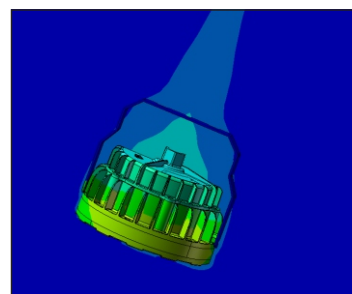
Thermal Air Convection (END)



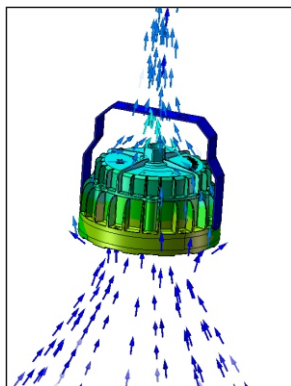
Thermal Air Convection (JUST)



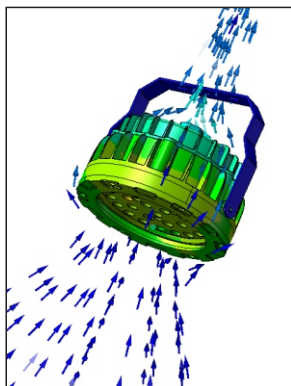
Thermal Air Convection (SIDE)



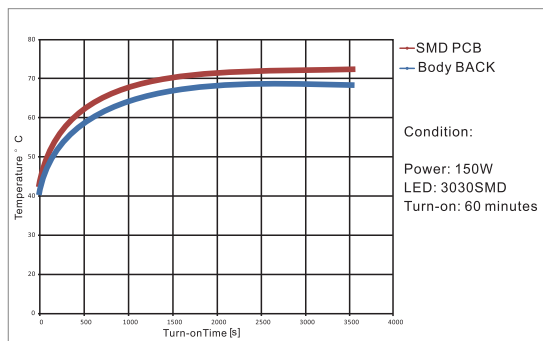
Thermal Air Convection



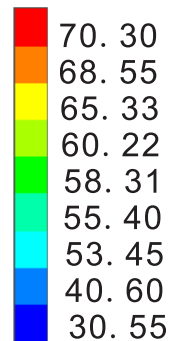
Thermal Air Convection



Thermal Air Convection

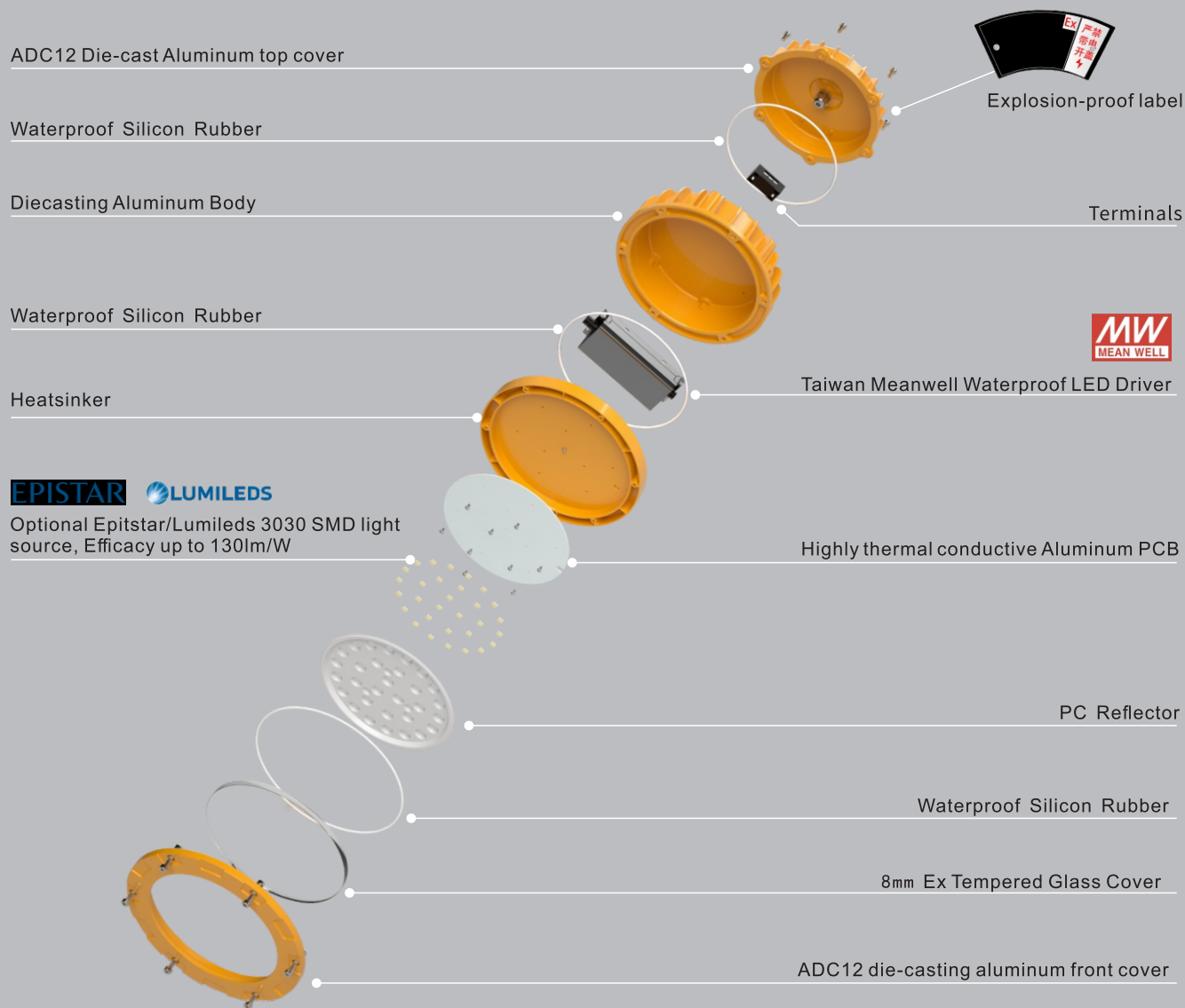


Temperature Rise Curve



Unit: °C

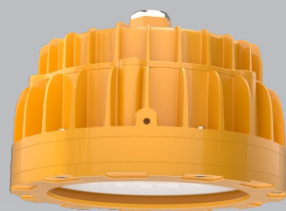
EXPLODED



ACCESSORIES



Convex glass



Flat glass



Protective net



Lampshade

APPLICATIONS

Suitable for a variety of complex indoor and outdoor applications

Lighting environment, such as workshops, warehouses,

Tunnels, chemical plants, smelters

Gas stations and other dangerous places.



Chemical plant scene



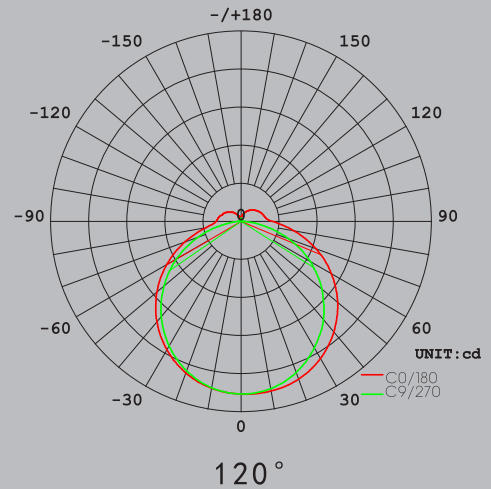
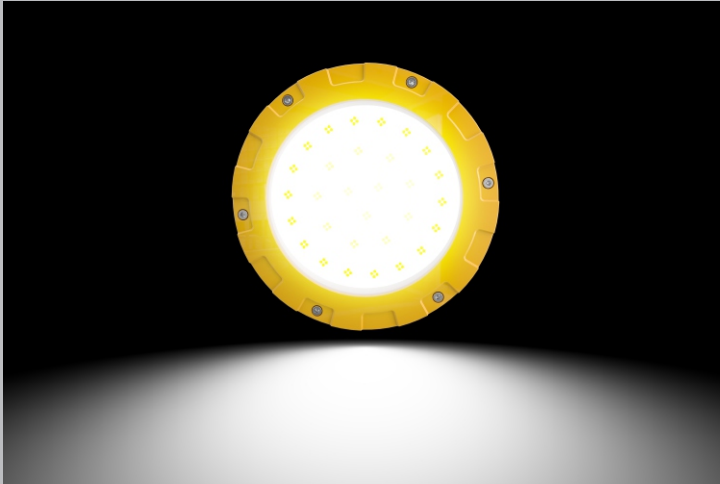
Chemical warehouse scene



OPTICS

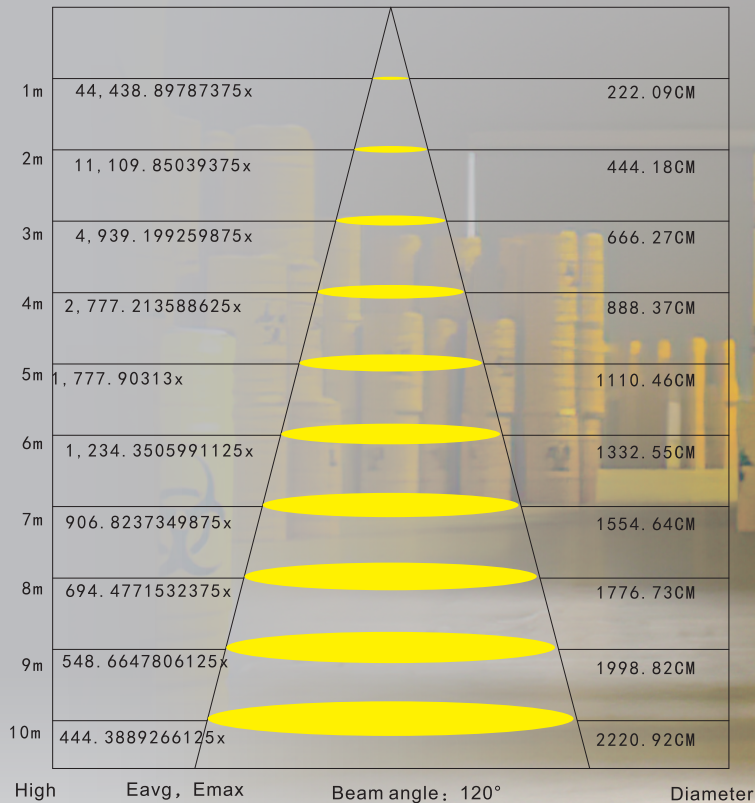
Tech.Support: Tell us the room length, width, height and the usage.

We have an engineer team to respnd the DIALUX simulations for lights quantity calculation and effects. ies files are available upon request.



100W AVERAGE ILLUMINATION DIAGRAM

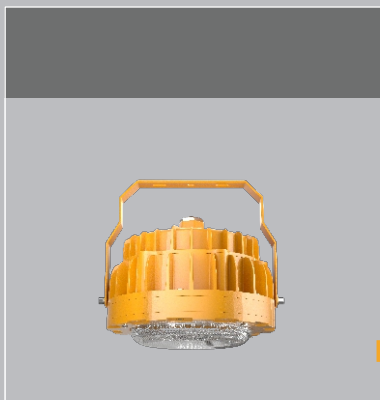
Light output: 17,375lm



INSTALLATIONS

A variety of installation methods can be selected to meet the needs of different lighting places.

- For places with explosion-proof requirements, the terminals should be properly installed using explosion-proof junction boxes. The installation must be completed by a professional electrician and must be reliably grounded.



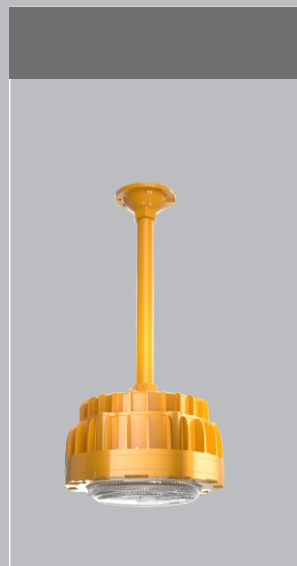
Bracket model

Ceiling mounted installation



Hanging chain
style

Hanging chain installation



Boom type

Boom installation

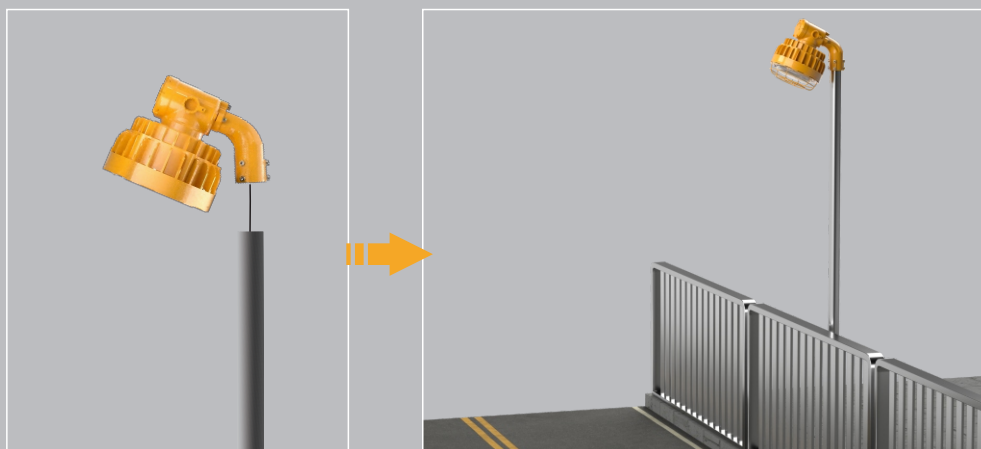


Wall mounted installation

INSTALLATIONS

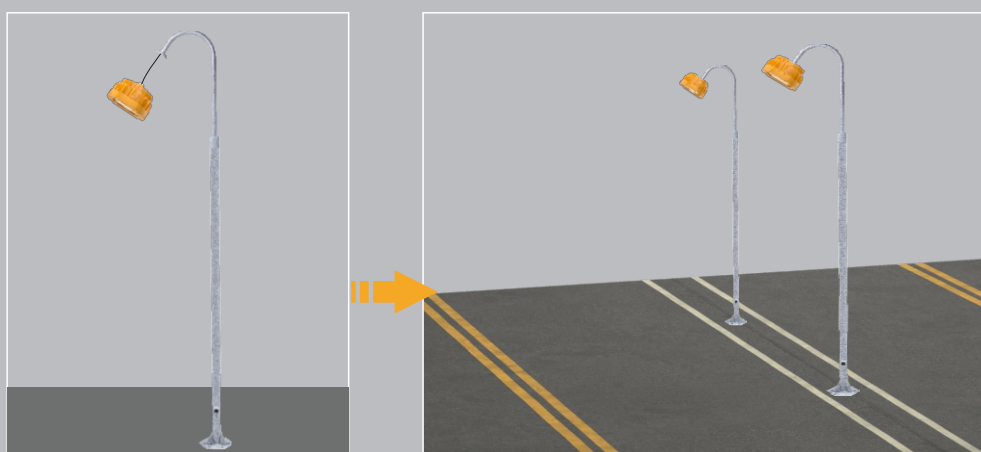
A variety of installation methods can be selected to meet the needs of different lighting places.

- For places with explosion-proof requirements, the terminals should be properly installed using explosion-proof junction boxes. The installation must be completed by a professional electrician and must be reliably grounded.



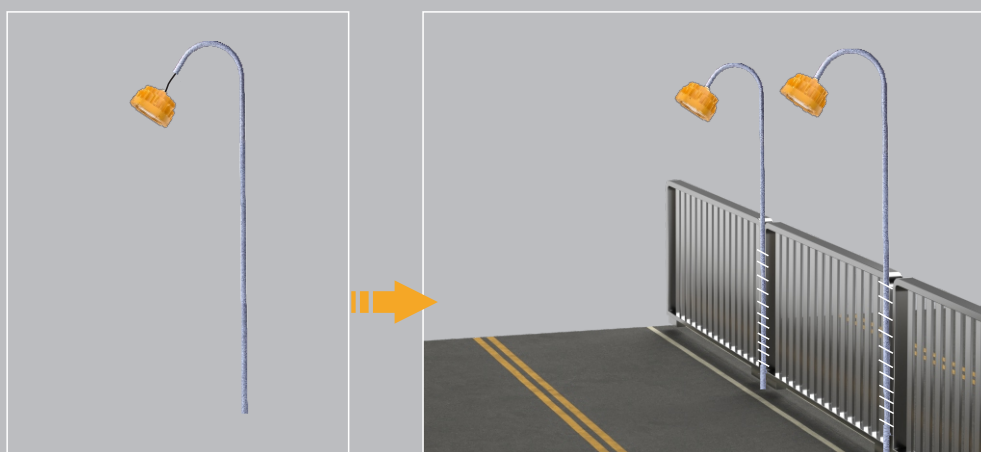
Street Lamp

Light pole installation



Regular style

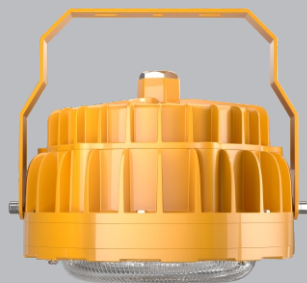
Flange installation



Regular style

Guardrail installation

A VARIETY OF STYLES



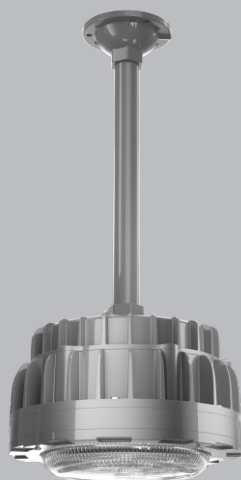
Bracket model



Bracket hanging chain



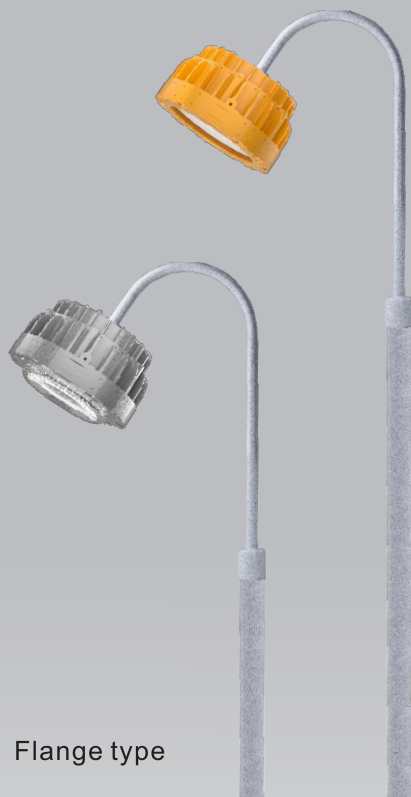
Boom type



Wall mounted installation



Lamp pole model



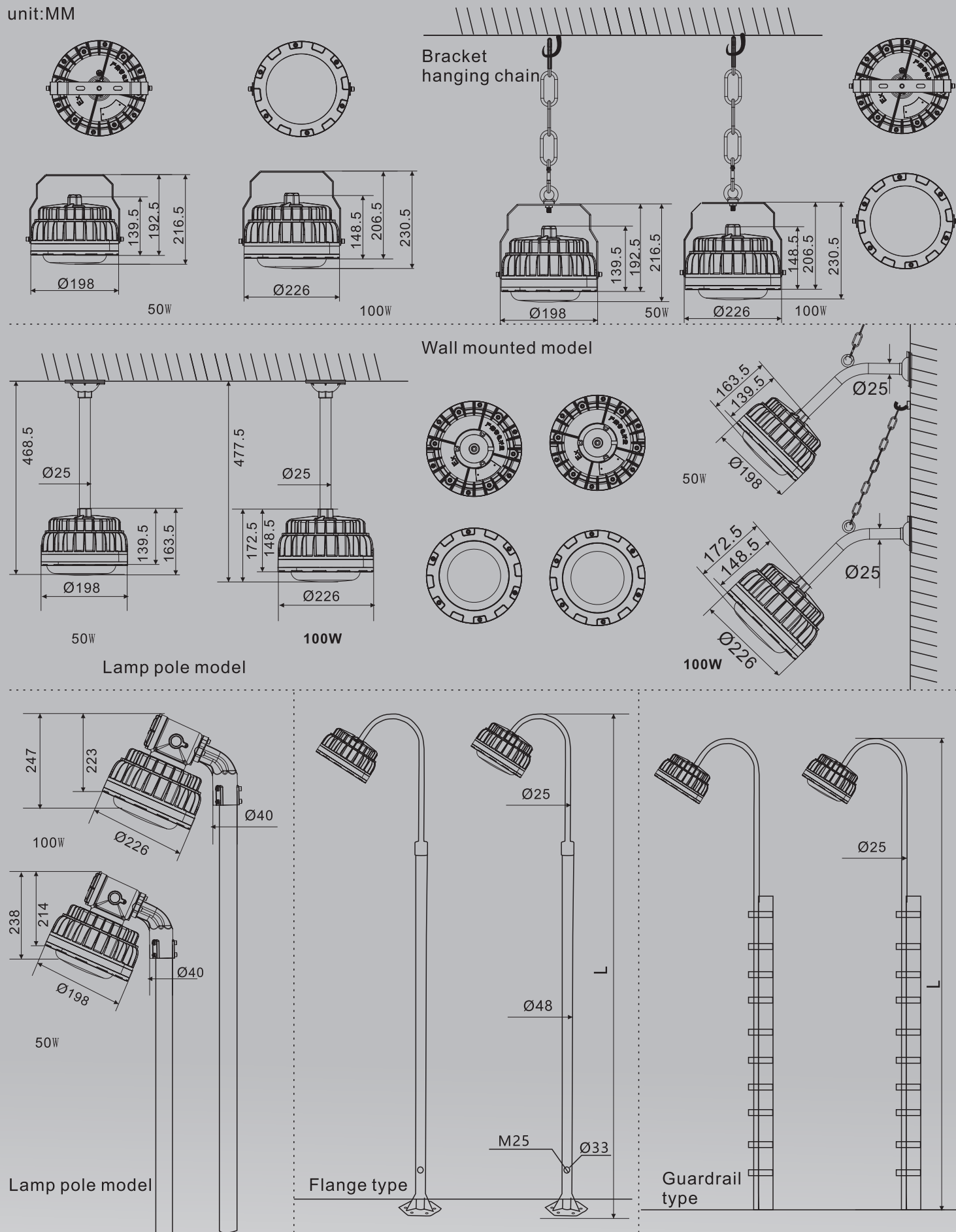
Flange type



Guardrail type

DIAGRAMS

unit:MM



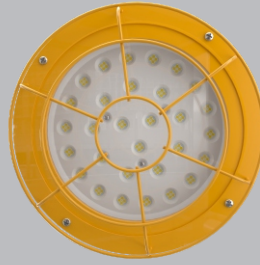
VARIOUS ACCESSORIES



Top
Yellow



Flat Glass



Convex Glass



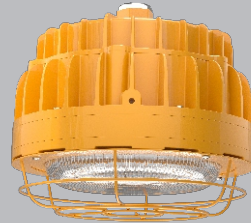
Protective Net Bottom



Flat Glass



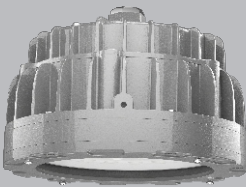
Convex Glass



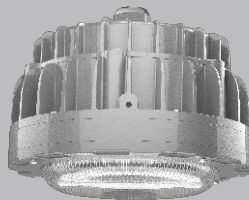
Protective Net



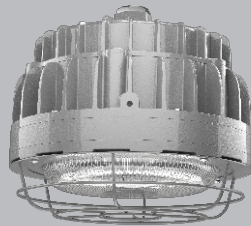
Lampshade



Flat Glass



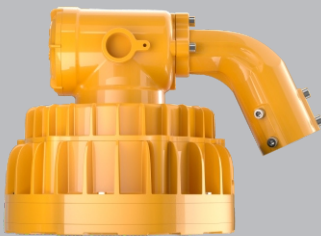
Convex Glass



Protective Net



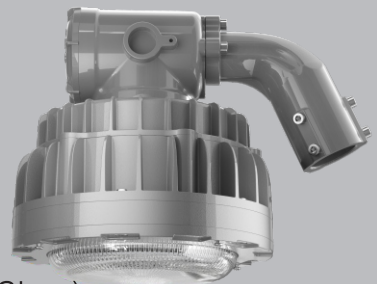
Lampshade



Elbow (Flat Glass)

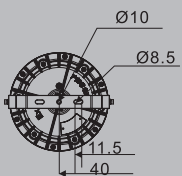


Elbow (Convex Glass)

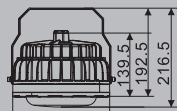


LAMP BODY SIZE Unit: MM

30W/50W/60W/70W



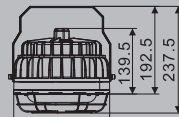
TOP



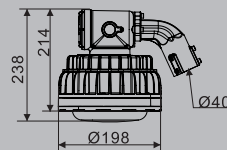
Convex Glass



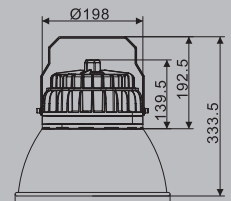
Flat Glass



Protective net

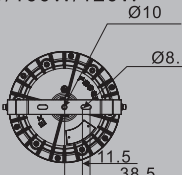


Elbow

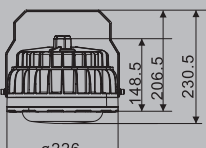


Lampshade

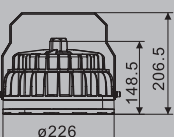
80W/100W/120W



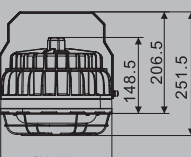
TOP



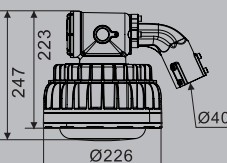
Convex Glass



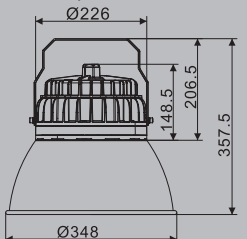
Flat Glass



Protective net
10



Elbow



Lampshade

SPECIFICATIONS



Power	30W	50W	60W	70W	80W	100W	120W
Supply	Taiwan MEAN WELL waterproof power supply						
Voltage	100-277V 50Hz						
Lumen	130Lm/W						
CCT	3200-6500K						
PF	>0.95						
Protection Grade	IP66						
Ra	>80						
Size	See Diagrams						
Anti-corrosion	WF1-WF2						
Import Device	G3/4						
Cable Suitable	10~20mm						
Ex	Ex demb IIC T5/T6 Gb/Ex tD A21 IP66 T95° /T80°						
Accessories	Convex Glass/Flat Glass/ Protective Net/Lampshade						
Installation	1. Bracket ceiling mounted type 2. Bracket hanging chain type 3. Boom type 4. Wall-mounted type 5. Street lamp type 6. Flange type 7. Guardrail type						

PACKAGING





FEATURES:

1. Voltage 100-277V/50HZ.
2. 130lm/W lumens.
3. Color temperature is 3200-6500K.
4. Suitable for lighting in chemical plants, logistics warehouses, and other places where safety is required.
5. Anti-corrosion grade WF1-WF2.
6. Explosion-proof mark: Ex demb IIC T5/T6 Gb/Ex tD A21 IP66 T95°C /T80° C.
7. Contains various accessories such as convex glass/flat glass/protective net/lampshade.
8. Multiple installation methods: bracket ceiling-mounted installation/bracket hanging chain type/suspended rod type.

CAUTIONS:

1. Installation must be done by professional electricians. .
2. Do NOT dismantle the product. It may be dangerous.
3. Do NOT stare at the light with naked eyes. It is harmful to eyes.
4. For outdoor lighting, waterproof measurements must be done to the cable terminals.



《CCC》



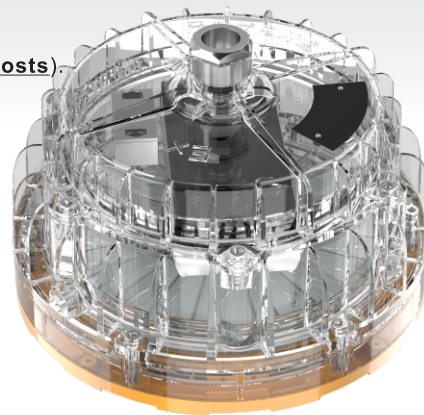
《Appearance Design
Patent Certificate》



《Explosion-proof Certificate》

WARRANTY:

1. All LED lights are warranted by the manufacturer to be free of defects in material and workmanship for 3 years(**or 5 years with different costs**).
2. Warranty becomes void if the products is modified, improperly installed or used, damaged by accident or neglect, or if any parts are improperly installed or replaced by the user,
3. During the period of warranty time, if some products of us fails during normal circumstances and applications or have any defects above defined, we shall at our own choice replace or repair the defective products at no charge. And the liability claims would NOT exceed the value of the product itself.



Perspective

SHENZHEN FEICHI LIGHTING CO., LTD.

Tel.: 13528411508 13392903966 E-mail: 4989298@qq.com
Address: Room 312, Building 2, No. 111, Lianbu Road, Helian Community,
Longhua Street, Longhua District, Shenzhen City