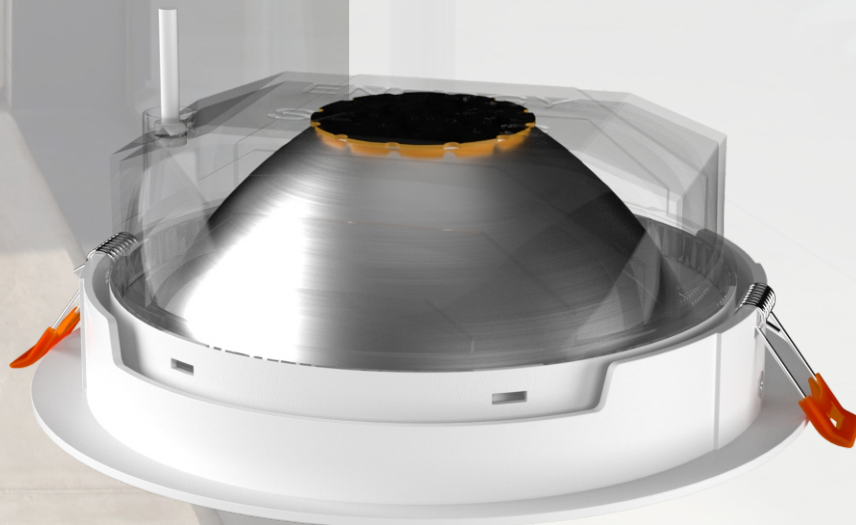
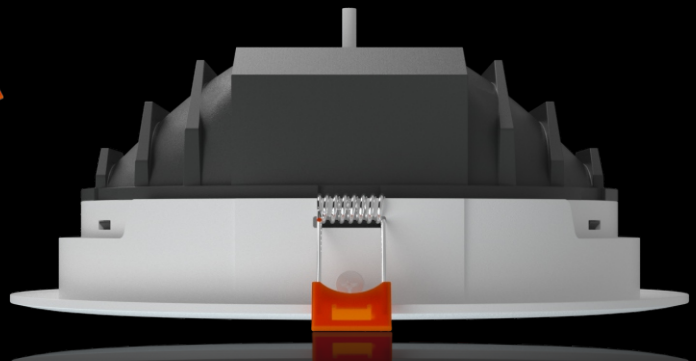


V IENNA

DIECASTING ALUMINUM COB
DOWNLIGHT WITH OPTICAL REFLECTOR
INSIDE AND EXTERNAL LED DRIVER.



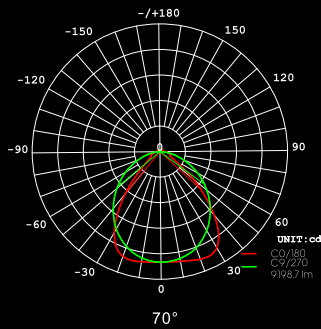
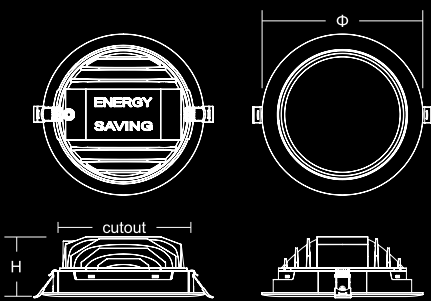
V IENNA



Parameters

| Model | Power | Actual power | Voltage | Size(mm) | Cut-out(mm) |
|------------|-------|--------------|---------|----------|-------------|
| HEC-CBN-3 | 3W | 3W±10% | 85-265V | Φ66*30 | Φ48 |
| HEC-CBN-5 | 5W | 5W±10% | 85-265V | Φ80*34 | Φ62 |
| HEC-CBN-7 | 7W | 7W±10% | 85-265V | Φ100*36 | Φ73 |
| HEC-CBN-12 | 12W | 12W±10% | 85-265V | Φ129*45 | Φ100 |
| HEC-CBN-18 | 18W | 18W±10% | 85-265V | Φ169*63 | Φ150 |
| HEC-CBN-30 | 30W | 30W±10% | 85-265V | Φ220*72 | Φ193 |

Power factor :0.55PF±10%
 CCT:3000K/4000K/6500K
 Material:Aluminum+Plastic
 CRI:Ra>80
 COB Luminous: 120lm/w
 Beam Angle:70°



APPLICATIONS:

WIDELY APPLICABLE TO INDOOR LOCATIONS, SUCH AS HOTELS, RESTAURANTS, OFFICES, SHOWROOMS, HOUSES AND SIMILAR PLACES.

