



# FEICHI 菲驰照明

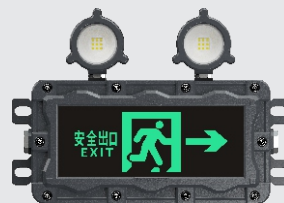
**EXPLOSION-PROOF  
EMERGENCY LIGHT**

2\*3W / 2\*5W / 3W

Customizable Patterns



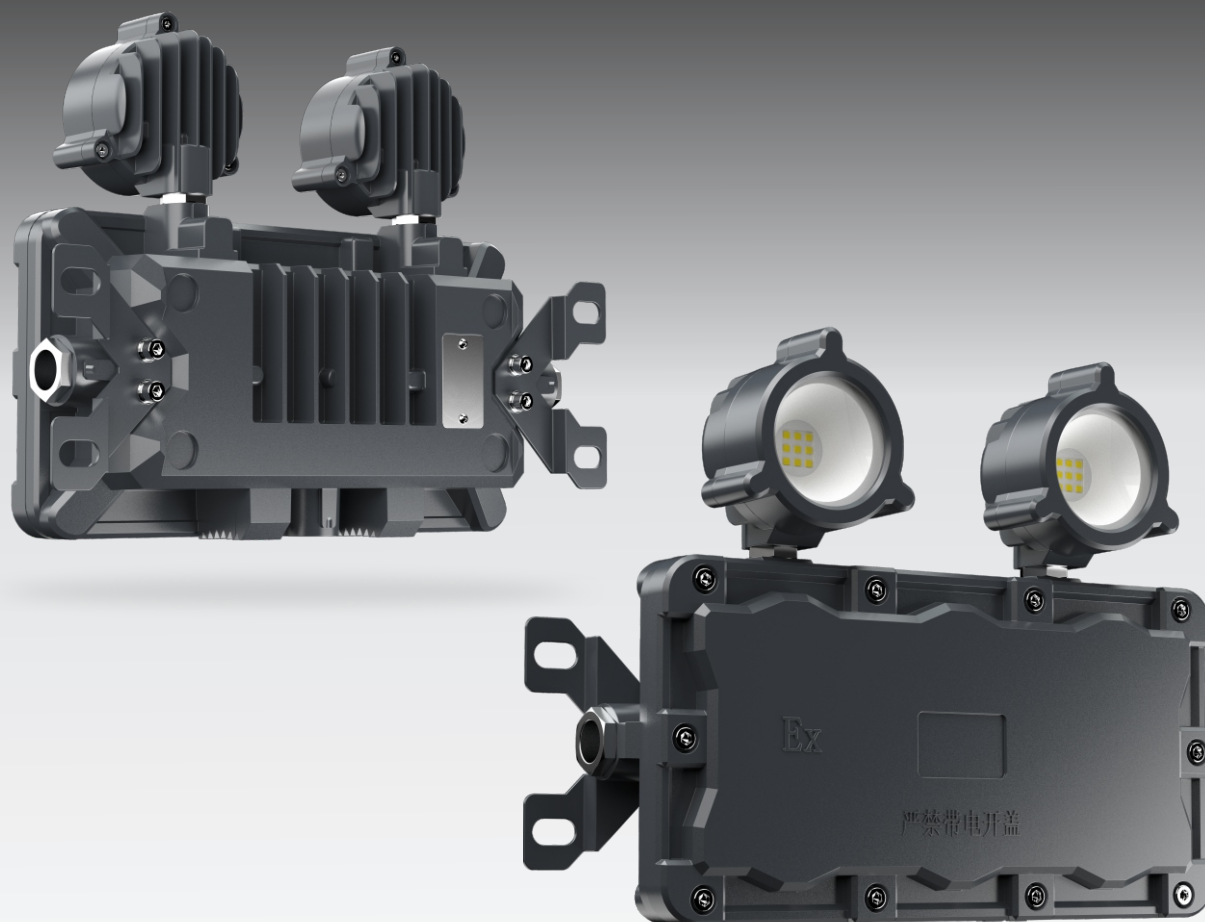
Product VR



EX DB IIB T4/T6 GB; EX DB IIC T4/T6 GB; EX TB IIC T130°C/T80°C DB IP66

**SHENZHEN FEICHI LIGHTING CO., LTD.**

## OVERVIEW

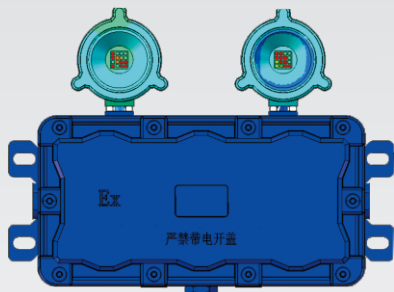
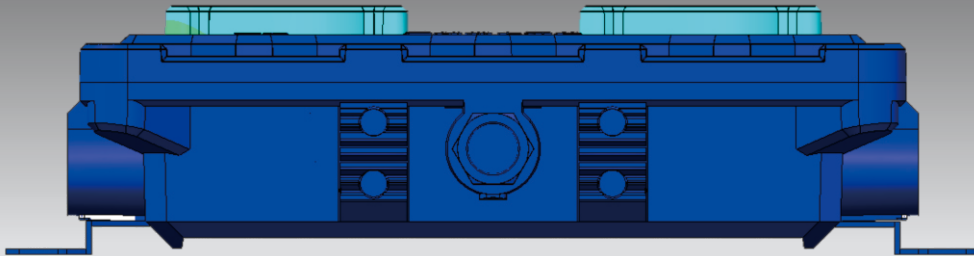


## CUSTOMIZABLE PATTERNS

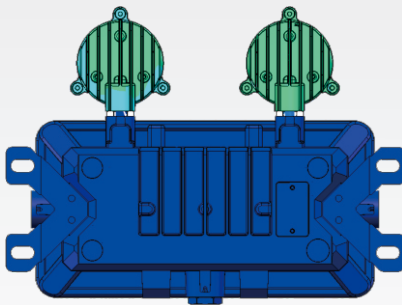


## THERMAL MANAGEMENT

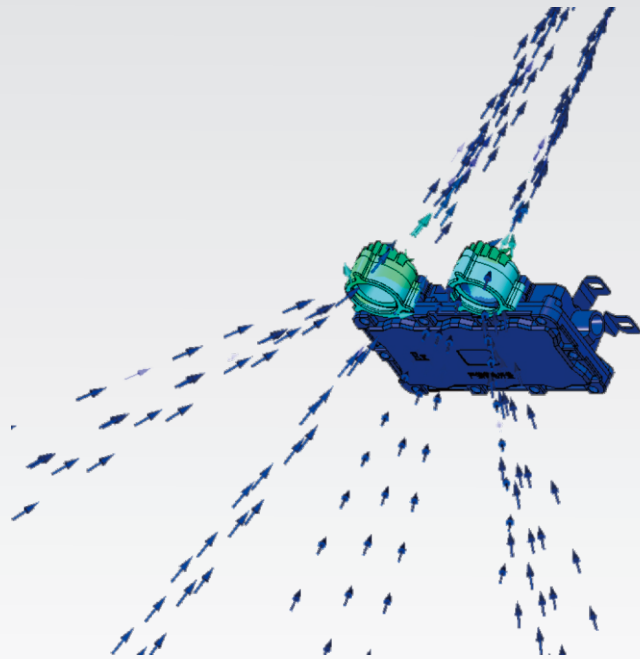
Advanced Finite Element Analysis (FEA) techniques are employed to optimize the product's heat dissipation structure. The luminaire exhibits excellent temperature rise control, characterized by a minimal temperature differential between its interior and exterior, uniform heat distribution, and a high lumen maintenance rate.



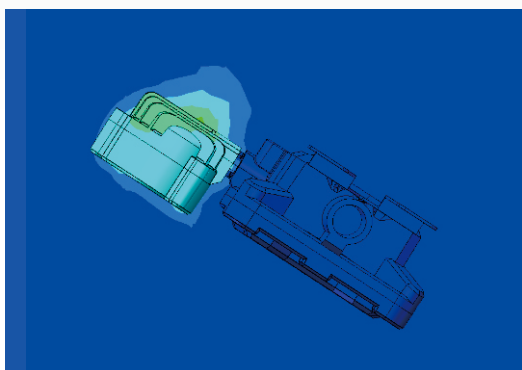
Thermal Conductivity( Front)



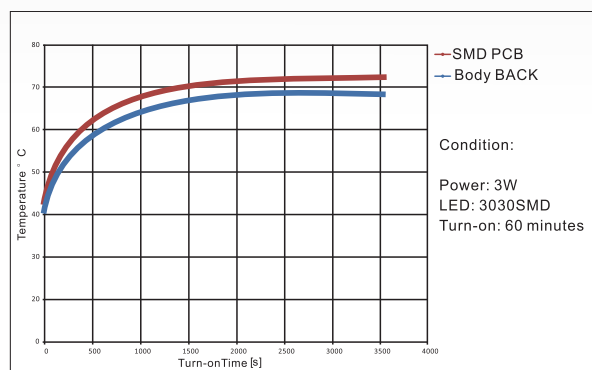
Thermal Conductivity( Back)



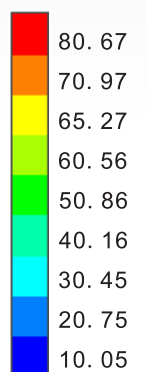
Thermal Air Convection



Thermal Effects to Air



Temperature Rise Curve



Unit:°C



## DUAL-HEAD EMERGENCY LIGHT: APPLICATION SCENARIOS

Suitable for: Lighting in petroleum, petrochemical, chemical, metallurgical, railway, electric power, steel, aviation, and shipbuilding industries, as well as various large-scale industrial facilities.

Suitable for Zone 1 and Zone 2 locations within explosive gas environments.

Suitable for explosive gas environments classified as Group IIA and IIB.

Suitable for Zone 21 and Zone 22 locations within combustible dust environments.



内部消防通道



Emergency





## DUAL-HEAD EMERGENCY LIGHT SPECIFICATIONS

FC-GBYJD-1

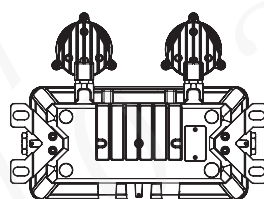
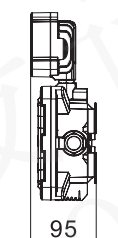
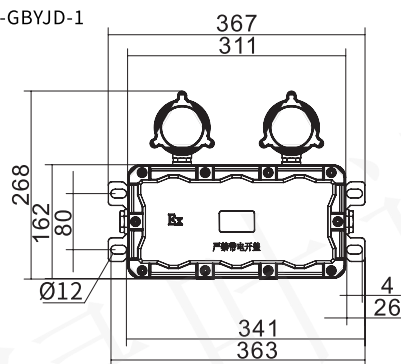


Optional Knob Version

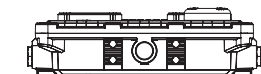
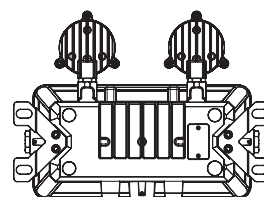
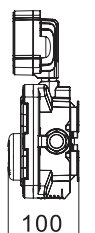
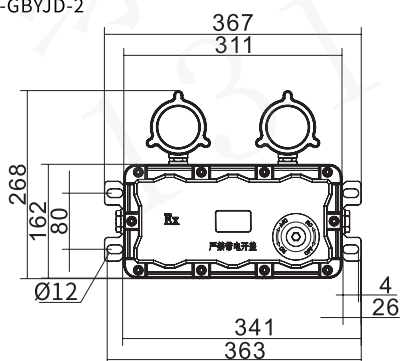
### DIAGRAMS

Unit:MM

FC-GBYJD-1



FC-GBYJD-2



### Main Parameters

Model	FC-GBYJD-1	FC-GBYJD-2
Power	2*3W	2*5W
Size (mm)	367*268*95mm	
CCT	3000K / 4200K / 5000K / 6500K	
Backup Hours	90 Min.	
Operational Voltage	24V / 36V / 220V 50Hz-60Hz Centralized Control (Customizable)	
Protection Grade	IP66	
Corrosion Protection	WF1-WF2	
Explosion-proof Marking	Ex db IIB T4/T6 Gb; Ex db IICT4/T6 Gb; Ex tb IIICT130°C/T80°C Db IP66	

## INDICATOR LIGHT APPLICATION SCENARIOS

Suitable for: Lighting in petroleum, petrochemical, chemical, metallurgical, railway, electric power, steel, aviation, and shipbuilding industries, as well as various large-scale industrial facilities.

Suitable for Zone 1 and Zone 2 locations within explosive gas environments.

Suitable for explosive gas environments classified as Group IIA and IIB.

Suitable for Zone 21 and Zone 22 locations within combustible dust environments.



Internal Staircase Fire Exit



KEEP CLOSE  
AT SEA





## INDICATOR LIGHT PARAMETERS

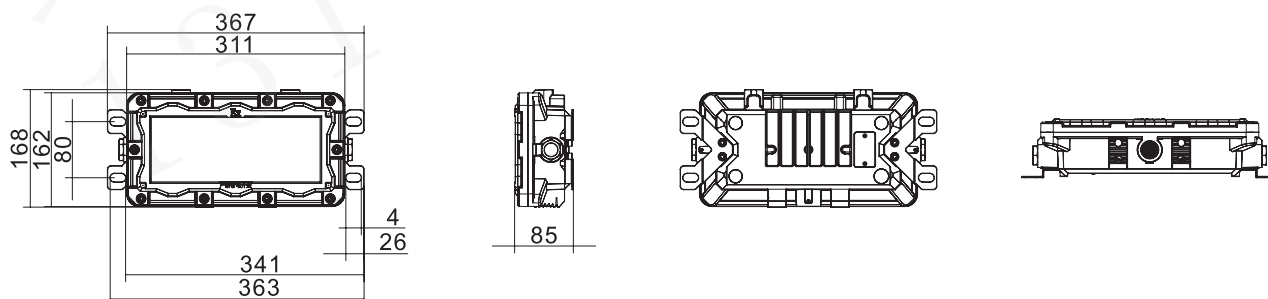
FC-GBBZD



## Diagrams

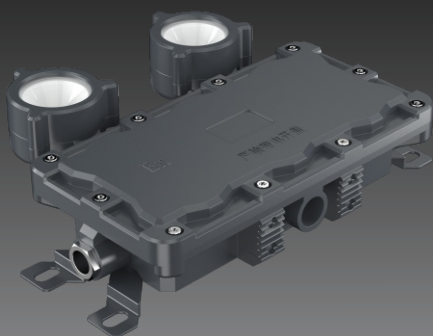
Unit:MM

FC-GBBZD



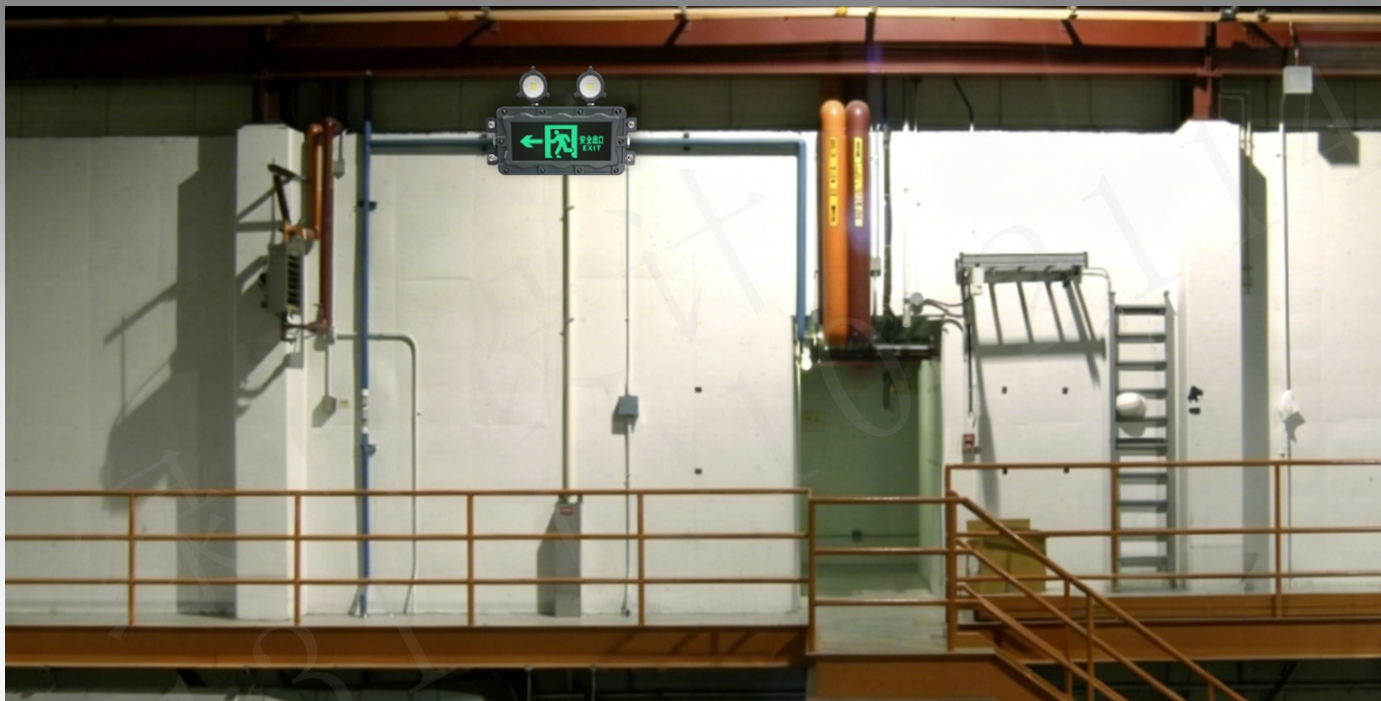
## Main Parameters

Model	FC-GBBZD
Power	3W
Size (mm)	367*168*85mm
CCT	3000K / 4200K / 5000K / 6500K
Backup Hours	90 Min.
Operational Voltage	24V / 36V / 220V 50Hz -60Hz Centralized Control (Customizable)
Protection Grade	IP66
Corrosion Protection	WF1-WF2
Explosion-proof Marking	Ex db IIB T4/T6 Gb; Ex db IICT4/T6 Gb; Ex tb IIICT130°C/T80°C Db IP66



### PRODUCT FEATURES:

1. The lamp body is constructed from national-standard ADC-12 aluminum alloy, offering high structural strength as well as excellent heat dissipation and corrosion resistance. Its explosion-proof structural design renders it suitable for use in over 99% of environments where explosive gases or dust are present.
2. Utilizes CREE brand chips, delivering high luminous efficacy and a long service life.
3. Glass: 10mm tempered glass.
4. Slogans and graphic patterns are customizable.
5. The emergency light head is replaceable.



### INSTALLATIONS

Multiple mounting options to meet the needs of various lighting environments.



Wall Mounted

### CAUTIONS

1. Strictly prohibit opening the cover while the unit is powered on.
  2. Installation must be performed by a professional electrician.
  3. Do not disassemble the luminaire to avoid creating a hazard.
  5. For outdoor installations, wire connections must be waterproofed.
  6. For locations requiring explosion protection, wire connections must be properly installed using explosion-proof wiring components.
- Installation must be performed by a professional electrician and include reliable grounding.

### SHENZHEN FEICHI LIGHTING CO., LTD.

E-mail: Michael@feichiex.com

E-mail: zhang@feichiex.com

Mr. Chen: 13528411508

Michael: 18664432015

Ms. Lin: 13680225080

Ms. Zhang: 18022052733

Production factory address: 5th Floor, No. 4, Hengkang Street, Guzhen Town, Zhongshan City, Guangdong Province

Marketing Center Address: Room 906, No. 10, Block 3, Sanhe Overseas Chinese New Village, Huarong Community, Dalang Subdistrict, Longhua District, Shenzhen, P.R.China.

Website: WWW.feichiex.com